

## Product datasheet for **TA317111**

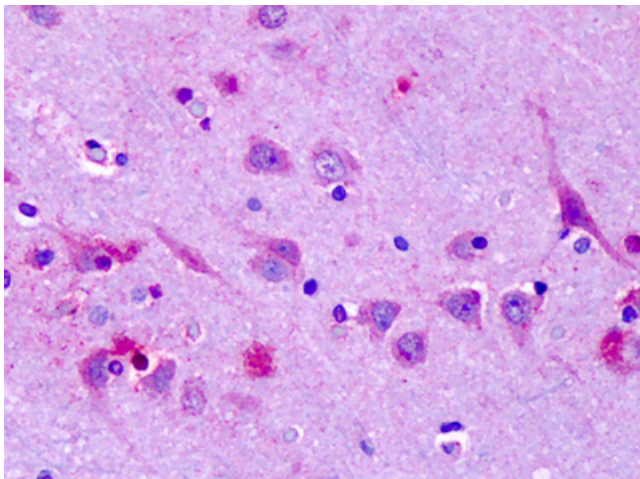
### OR6N1 Rabbit Polyclonal Antibody

#### Product data:

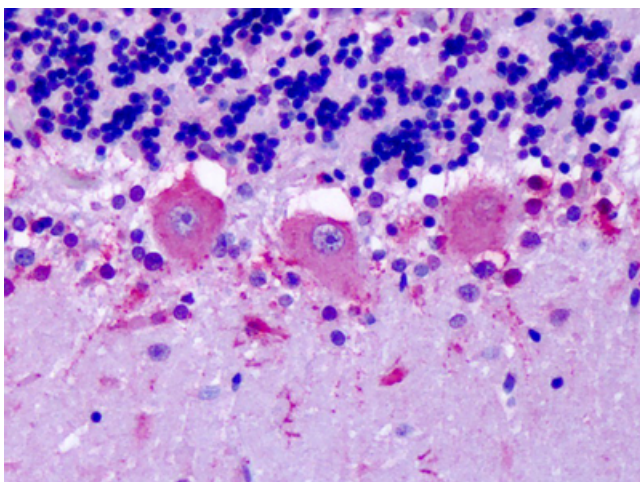
Product Type:	Primary Antibodies
Applications:	IHC
Recommended Dilution:	IHC-P (7 µg/ml)
Reactivity:	Gorilla, Human, Mouse, Rabbit, Rat, Gibbon, Hamster (Predicted: Monkey, Dog)
Host:	Rabbit
Isotype:	IgG
Clonality:	Polyclonal
Immunogen:	OR6N1 antibody was raised against synthetic 15 amino acid peptide from 1st extracellular domain of human OR6N1. Percent identity with other species by BLAST analysis: Human, Gorilla, Gibbon, Monkey, Mouse, Rat, Hamster, Elephant, Rabbit, Opossum (100%); Marmoset, Dog (93%); Panda, Bovine, Horse, Pig (87%).
Formulation:	PBS, 0.1% sodium azide.
Concentration:	lot specific
Purification:	Immunoaffinity Chromatography
Conjugation:	Unconjugated
Storage:	Store at -20°C as received.
Stability:	Stable for 12 months from date of receipt.
Gene Name:	olfactory receptor family 6 subfamily N member 1
Database Link:	<a href="#">NP_001005185</a> <a href="#">Entrez Gene 488618 Dog</a> <a href="#">Entrez Gene 719958 Monkey</a> <a href="#">Entrez Gene 128372 Human</a> <a href="#">Q8NGY5</a>
Synonyms:	OR1-22
Note:	Specific for Human OR6N1. BLAST analysis of the peptide immunogen showed no homology with other human proteins, except OR6K3 (67%).
Protein Families:	Transmembrane
Protein Pathways:	Olfactory transduction



[View online »](#)

**Product images:**

Anti-OR6N1 antibody IHC of human brain, cortex, neurons. Immunohistochemistry of formalin-fixed, paraffin-embedded tissue after heat-induced antigen retrieval. Antibody concentration 6-14 ug/ml.



Anti-OR6N1 antibody IHC of human brain, cerebellum, Purkinje neurons. Immunohistochemistry of formalin-fixed, paraffin-embedded tissue after heat-induced antigen retrieval. Antibody concentration 6-14 ug/ml.