

## Product datasheet for **TA317104**

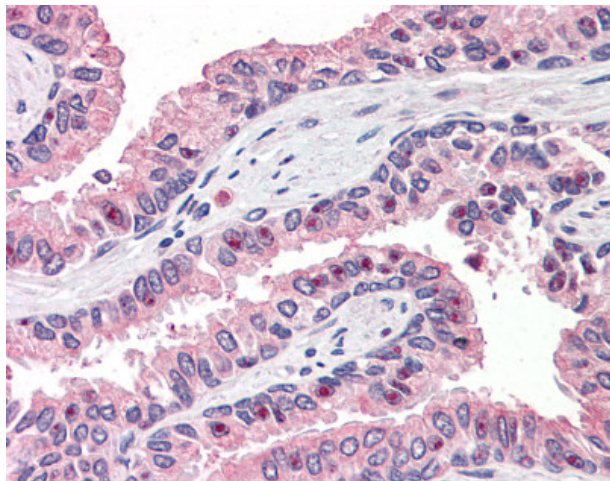
### OLFM4 Rabbit Polyclonal Antibody

#### Product data:

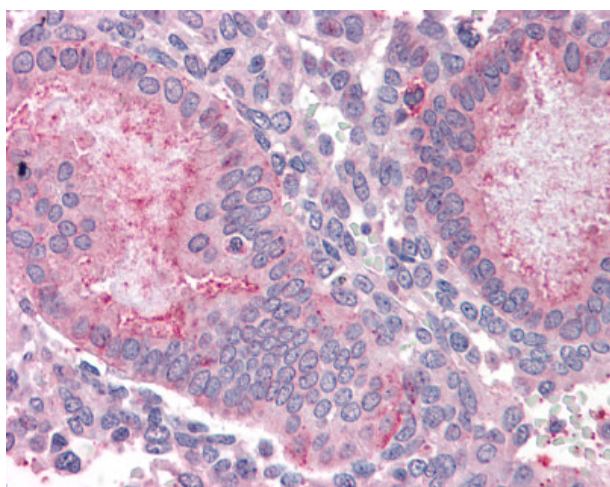
Product Type:	Primary Antibodies
Applications:	IHC
Recommended Dilution:	IHC-P (15 - 20 µg/ml)
Reactivity:	Chimpanzee, Dog, Gorilla, Human, Orang-Utan (Predicted: Monkey)
Host:	Rabbit
Isotype:	IgG
Clonality:	Polyclonal
Immunogen:	OLFM4 / Olfactomedin 4 antibody was raised against synthetic 15 amino acid peptide from internal region of human OLFM4. Percent identity with other species by BLAST analysis: Human, Chimpanzee, Gorilla, Orangutan, Dog (100%); Gibbon, Monkey, Panda (93%); Marmoset, Bat (87%); Hamster, Rabbit, Pig (80%).
Formulation:	PBS, 0.1% sodium azide.
Concentration:	lot specific
Purification:	Immunoaffinity Chromatography
Conjugation:	Unconjugated
Storage:	Store at -20°C as received.
Stability:	Stable for 12 months from date of receipt.
Gene Name:	olfactomedin 4
Database Link:	<a href="#">NP_006409</a> <a href="#">Entrez Gene 485470 Dog</a> <a href="#">Entrez Gene 694574 Monkey</a> <a href="#">Entrez Gene 10562 Human</a> <a href="#">Q6UX06</a>
Synonyms:	bA209j19.1; GC1; GW112; hGC-1; hOLFd; OlfD; OLM4; UNQ362
Note:	Specific for Human OLFM4. BLAST analysis of the peptide immunogen showed no homology with other human proteins.
Protein Families:	Druggable Genome



[View online »](#)

**Product images:**

Anti-OLFM4 antibody IHC of human prostate. Immunohistochemistry of formalin-fixed, paraffin-embedded tissue after heat-induced antigen retrieval.



Anti-OLFM4 antibody IHC of human uterus. Immunohistochemistry of formalin-fixed, paraffin-embedded tissue after heat-induced antigen retrieval.