

Product datasheet for **TA317103**

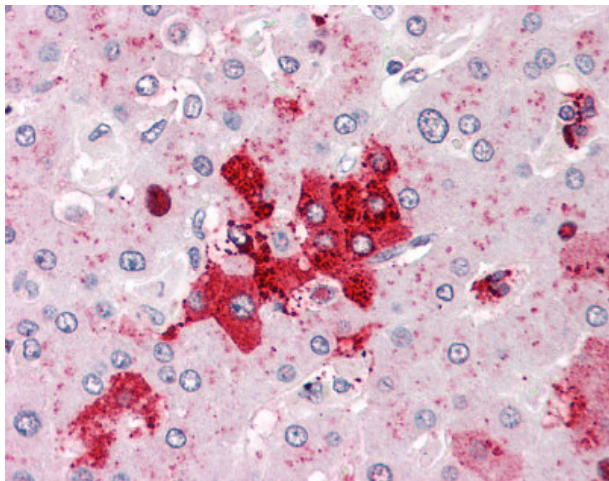
OLFM4 Rabbit Polyclonal Antibody

Product data:

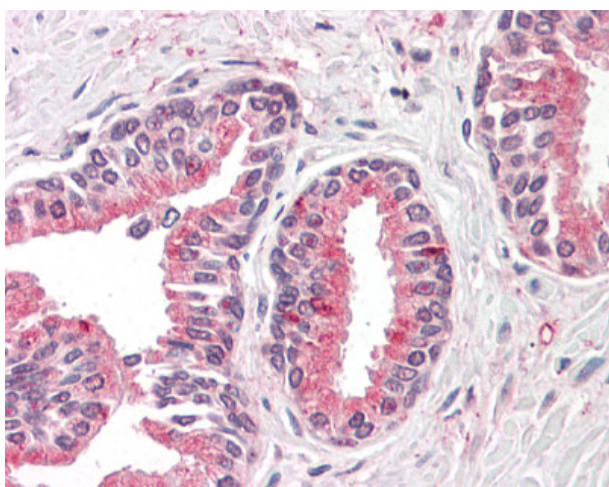
Product Type:	Primary Antibodies
Applications:	IHC
Recommended Dilution:	IHC-P (10 - 15 µg/ml)
Reactivity:	Chimpanzee, Gorilla, Human, Monkey, Gibbon (Predicted: Guinea Pig)
Host:	Rabbit
Isotype:	IgG
Clonality:	Polyclonal
Immunogen:	OLFM4 / Olfactomedin 4 antibody was raised against synthetic 16 amino acid peptide from internal region of human OLFM4. Percent identity with other species by BLAST analysis: Human, Chimpanzee, Gorilla, Gibbon, Monkey, Marmoset (100%); Guinea pig (94%); Orangutan, Rat, Hamster, Dog, Rabbit (88%); Galago, Mouse, Panda, Horse (81%).
Formulation:	PBS, 0.1% sodium azide.
Concentration:	lot specific
Purification:	Immunoaffinity Chromatography
Conjugation:	Unconjugated
Storage:	Store at -20°C as received.
Stability:	Stable for 12 months from date of receipt.
Gene Name:	olfactomedin 4
Database Link:	NP_006409 Entrez Gene 694574 Monkey Entrez Gene 10562 Human Q6UX06
Synonyms:	bA209j19.1; GC1; GW112; hGC-1; hOLFd; OlfD; OLM4; UNQ362
Note:	Specific for Human OLFM4. BLAST analysis of the peptide immunogen showed no homology with other human proteins.
Protein Families:	Druggable Genome



[View online »](#)

Product images:

Anti-OLFM4 antibody IHC of human liver. Immunohistochemistry of formalin-fixed, paraffin-embedded tissue after heat-induced antigen retrieval.



Anti-OLFM4 antibody IHC of human prostate. Immunohistochemistry of formalin-fixed, paraffin-embedded tissue after heat-induced antigen retrieval.