

## Product datasheet for **TA317101**

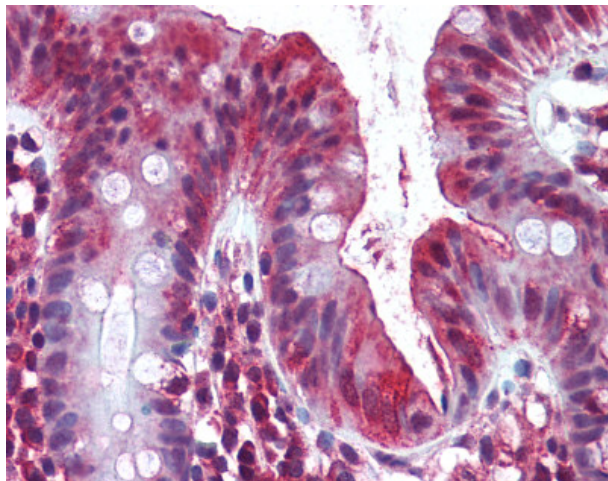
### OLFM4 Rabbit Polyclonal Antibody

#### Product data:

Product Type:	Primary Antibodies
Applications:	IHC
Recommended Dilution:	IHC-P (5 µg/ml), WB (0.5 - 2 µg/ml)
Reactivity:	Human, Gibbon (Predicted: Monkey)
Host:	Rabbit
Isotype:	IgG
Clonality:	Polyclonal
Immunogen:	OLFM4 / Olfactomedin 4 antibody was raised against a synthetic peptide corresponding to amino acids 400-419 (YVYNDGYLLNYDLSVLQKPQ) of human OLFM4 was used as immunogen for this antibody. Percent identity by BLAST analysis: Human, Gibbon (100%); Gorilla, Marmoset (95%); Monkey, Mouse, Rat (85%).
Formulation:	PBS, 0.05% BSA, 0.05% sodium azide.
Concentration:	lot specific
Purification:	Immunoaffinity Chromatography
Conjugation:	Unconjugated
Storage:	Store at -20°C as received.
Stability:	Stable for 12 months from date of receipt.
Gene Name:	olfactomedin 4
Database Link:	<a href="#">NP_006409</a> <a href="#">Entrez Gene 694574 Monkey</a> <a href="#">Entrez Gene 10562 Human</a> <a href="#">Q6UX06</a>
Synonyms:	bA209j19.1; GC1; GW112; hGC-1; hOLFd; OlfD; OLM4; UNQ362
Note:	Specific for A portion of amino acids 400-450 of human Olfactomedin 4
Protein Families:	Druggable Genome



[View online »](#)

**Product images:**

Anti-OLFM4 antibody IHC of human colon. Immunohistochemistry of formalin-fixed, paraffin-embedded tissue after heat-induced antigen retrieval. Antibody concentration 5 ug/ml.