

Product datasheet for **TA317091**

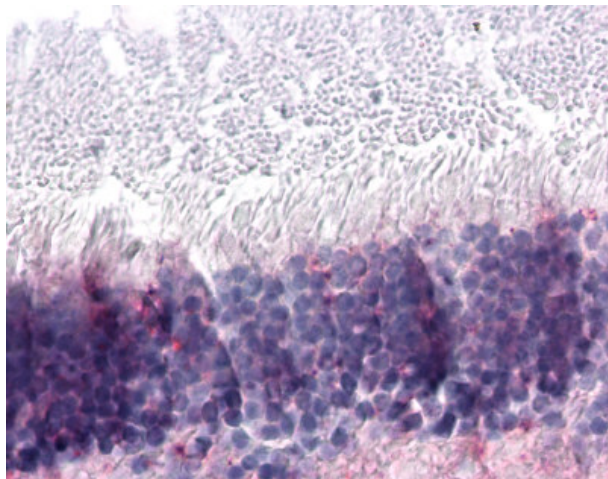
NR2E3 Rabbit Polyclonal Antibody

Product data:

Product Type:	Primary Antibodies
Applications:	IHC
Recommended Dilution:	IHC-P (30 µg/ml)
Reactivity:	Bat, Bovine, Chimpanzee, Gorilla, Human, Mouse, Pig, Gibbon, Hamster, Horse (Predicted: Monkey)
Host:	Rabbit
Isotype:	IgG
Clonality:	Polyclonal
Immunogen:	NR2E3 / PNR antibody was raised against synthetic 19 amino acid peptide from ligand-binding domain of human NR2E3. Percent identity with other species by BLAST analysis: Human, Chimpanzee, Gorilla, Gibbon, Monkey, Mouse, Hamster, Elephant, Panda, Bovine, Bat, Horse, Pig (100%); Marmoset (95%).
Formulation:	PBS, 0.1% sodium azide.
Concentration:	lot specific
Purification:	Immunoaffinity Chromatography
Conjugation:	Unconjugated
Storage:	Store at -20°C as received.
Stability:	Stable for 12 months from date of receipt.
Gene Name:	nuclear receptor subfamily 2 group E member 3
Database Link:	NP_055064 Entrez Gene 23958 Mouse Entrez Gene 701402 Monkey Entrez Gene 10002 Human Q9Y5X4
Synonyms:	ESCS; PNR; rd7; RNR; RP37
Note:	Specific for Human NR2E3. BLAST analysis of the peptide immunogen showed no homology with other human proteins.
Protein Families:	Druggable Genome, Nuclear Hormone Receptor, Transcription Factors



[View online »](#)

Product images:

Anti-NR2E3 antibody IHC of human retina. Immunohistochemistry of formalin-fixed, paraffin-embedded tissue after heat-induced antigen retrieval.