

Product datasheet for **TA317089**

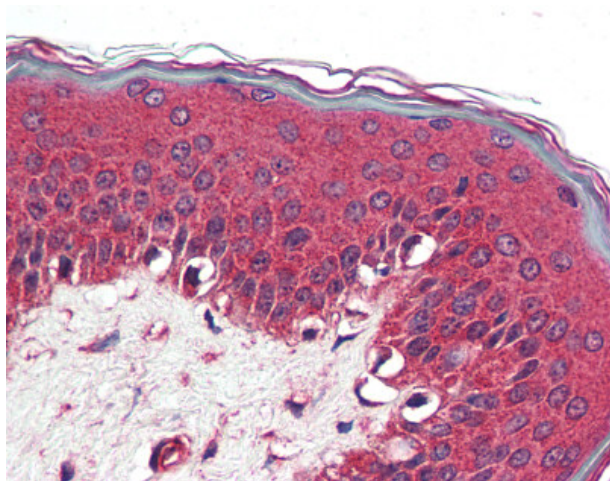
NR1D2 Rabbit Polyclonal Antibody

Product data:

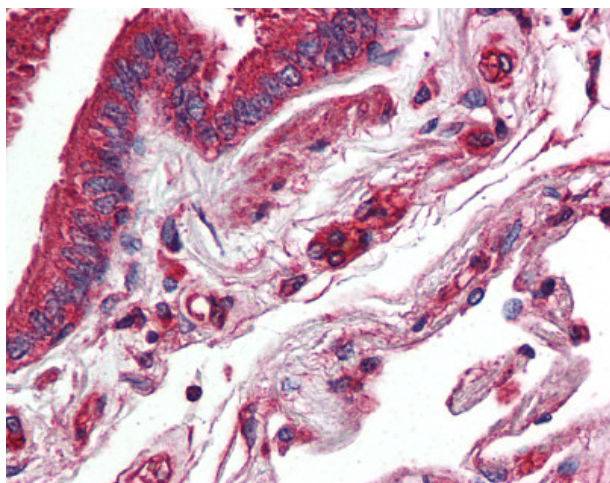
Product Type:	Primary Antibodies
Applications:	IHC
Recommended Dilution:	IHC-P (10 µg/ml)
Reactivity:	Human (Predicted: Monkey, Dog)
Host:	Rabbit
Isotype:	IgG
Clonality:	Polyclonal
Immunogen:	NR1D2 antibody was raised against synthetic 16 amino acid peptide from N-terminus of human NR1D2. Percent identity with other species by BLAST analysis: Human (100%); Gorilla, Gibbon, Monkey, Marmoset, Panda, Dog (94%); Bovine, Bat, Horse (88%); Elephant (81%).
Formulation:	PBS, 0.1% sodium azide.
Concentration:	lot specific
Purification:	Immunoaffinity Chromatography
Conjugation:	Unconjugated
Storage:	Store at -20°C as received.
Stability:	Stable for 12 months from date of receipt.
Gene Name:	nuclear receptor subfamily 1 group D member 2
Database Link:	NP_005117 Entrez Gene 485643 Dog Entrez Gene 701624 Monkey Entrez Gene 9975 Human Q14995
Synonyms:	BD73; EAR-1R; RVR
Note:	Specific for Human NR1D2. BLAST analysis of the peptide immunogen showed no homology with other human proteins.
Protein Families:	Druggable Genome, Nuclear Hormone Receptor, Transcription Factors



[View online »](#)

Product images:

Anti-NR1D2 antibody IHC of human skin. Immunohistochemistry of formalin-fixed, paraffin-embedded tissue after heat-induced antigen retrieval.



Anti-NR1D2 antibody IHC of human lung. Immunohistochemistry of formalin-fixed, paraffin-embedded tissue after heat-induced antigen retrieval.