

Product datasheet for **TA317085**

NR1D1 Rabbit Polyclonal Antibody

Product data:

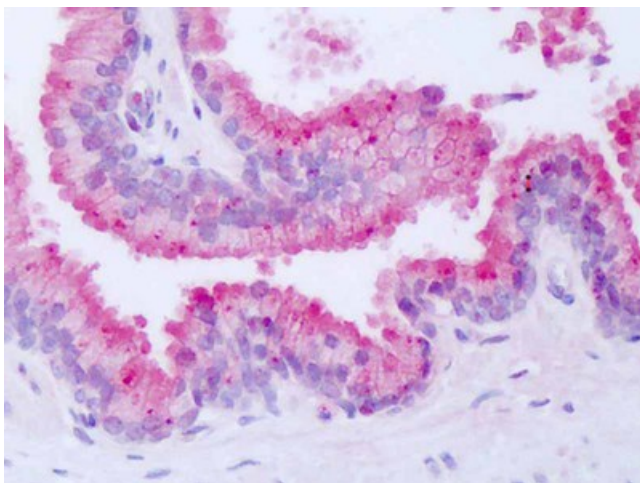
Product Type:	Primary Antibodies
Applications:	IHC
Recommended Dilution:	IHC-P (4 µg/ml)
Reactivity:	Bovine, Dog, Gorilla, Human, Monkey, Mouse, Pig, Rabbit, Rat, Gibbon, Hamster, Horse (Predicted: Bat)
Host:	Rabbit
Isotype:	IgG
Clonality:	Polyclonal
Immunogen:	NR1D1 antibody was raised against synthetic 17 amino acid peptide from internal region of human NR1D1. Percent identity with other species by BLAST analysis: Human, Gorilla, Gibbon, Marmoset, Mouse, Rat, Hamster, Elephant, Panda, Dog, Bovine, Horse, Rabbit, Pig (100%); Bat, Opossum, Lizard (94%).
Formulation:	PBS, 0.1% sodium azide.
Concentration:	lot specific
Purification:	Immunoaffinity Chromatography
Conjugation:	Unconjugated
Storage:	Store at -20°C as received.
Stability:	Stable for 12 months from date of receipt.
Gene Name:	nuclear receptor subfamily 1 group D member 1
Database Link:	NP_068370 Entrez Gene 217166 MouseEntrez Gene 252917 RatEntrez Gene 100688236 DogEntrez Gene 699472 MonkeyEntrez Gene 9572 Human P20393
Synonyms:	ear-1; EAR1; hRev; THRA1; THRAL
Note:	Specific for Human NR1D1. BLAST analysis of the peptide immunogen showed no homology with other human proteins, except NR1D2 (59%).
Protein Families:	Druggable Genome, Nuclear Hormone Receptor, Transcription Factors



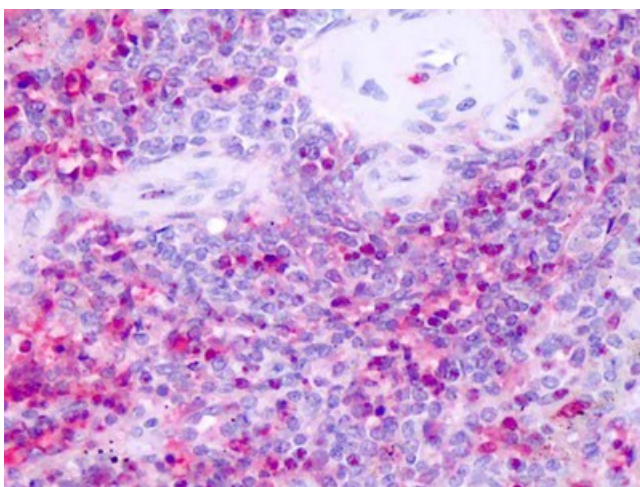
[View online »](#)

Protein Pathways: Circadian rhythm - mammal

Product images:



Anti-NR1D1 antibody IHC of human prostate. Immunohistochemistry of formalin-fixed, paraffin-embedded tissue after heat-induced antigen retrieval. Antibody dilution 4 ug/ml.



Anti-NR1D1 antibody IHC of human spleen. Immunohistochemistry of formalin-fixed, paraffin-embedded tissue after heat-induced antigen retrieval. Antibody dilution 4 ug/ml.