

## Product datasheet for **TA317078**

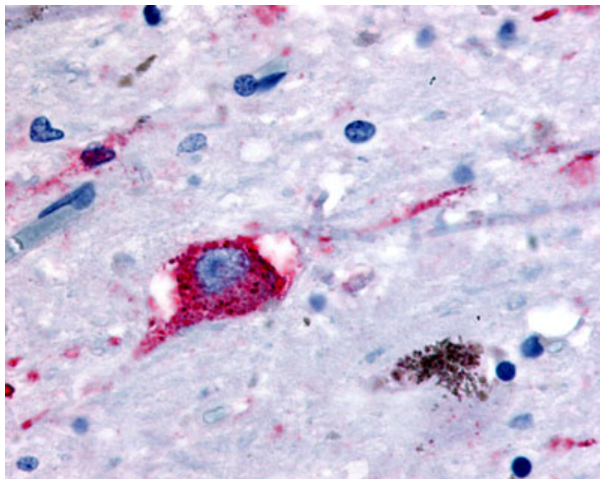
### NPBWR2 Rabbit Polyclonal Antibody

#### Product data:

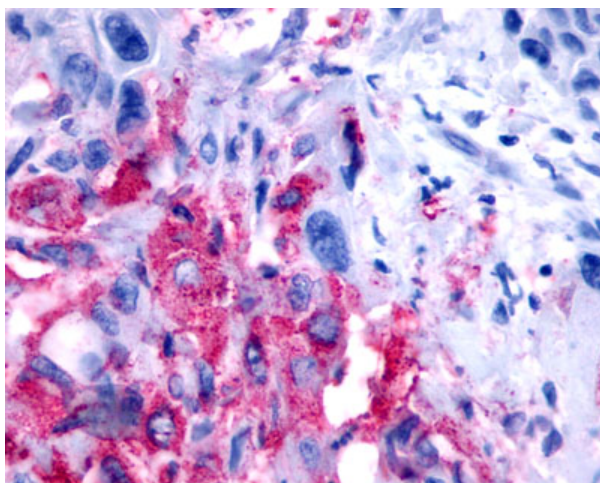
|                       |   |
|-----------------------|---|
| Product Type:         | Primary Antibodies  |
| Applications:         | IHC   |
| Recommended Dilution: | IHC-P (3 µg/ml)   |
| Reactivity:           | Gorilla, Human (Predicted: Monkey)  |
| Host:                 | Rabbit  |
| Isotype:              | IgG   |
| Clonality:            | Polyclonal  |
| Immunogen:            | NPBWR2 / GPR8 antibody was raised against synthetic 17 amino acid peptide from N-terminal extracellular domain of human NPBWR2. Percent identity with other species by BLAST analysis: Human, Gorilla (100%); Monkey, Marmoset (94%); Gibbon (88%). |
| Formulation:          | PBS, 0.1% sodium azide.   |
| Purification:         | Immunoaffinity Chromatography   |
| Conjugation:          | Unconjugated  |
| Storage:              | Store at -20°C as received.   |
| Stability:            | Stable for 12 months from date of receipt.  |
| Gene Name:            | neuropeptides B/W receptor 2  |
| Database Link:        | <a href="#">NP_005277</a><br><a href="#">Entrez Gene 719200 Monkey</a> <a href="#">Entrez Gene 2832 Human</a><br><a href="#">P48146</a>   |
| Synonyms:             | GPR8  |
| Note:                 | Specific for Human NPBWR2. BLAST analysis of the peptide immunogen showed no homology with other human proteins, except ADAM19 (59%).   |
| Protein Families:     | Druggable Genome, GPCR, Transmembrane   |
| Protein Pathways:     | Neuroactive ligand-receptor interaction   |



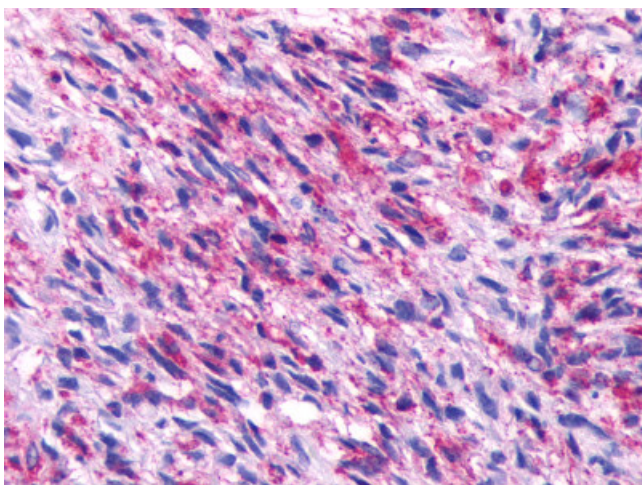
[View online »](#)

**Product images:**

Anti-NPBWR2 antibody IHC of human brain, neurons and glia. Immunohistochemistry of formalin-fixed, paraffin-embedded tissue after heat-induced antigen retrieval.



Anti-NPBWR2 / GPR8 antibody IHC of human Pancreas, Carcinoma. Immunohistochemistry of formalin-fixed, paraffin-embedded tissue after heat-induced antigen retrieval.



Anti-NPBWR2 / GPR8 antibody IHC of human Brain, Glioblastoma. Immunohistochemistry of formalin-fixed, paraffin-embedded tissue after heat-induced antigen retrieval.