

Product datasheet for **TA317076**

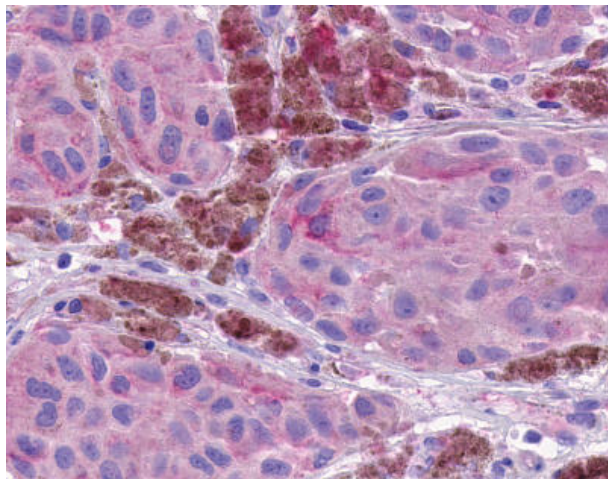
GPR7 (NPBWR1) Rabbit Polyclonal Antibody

Product data:

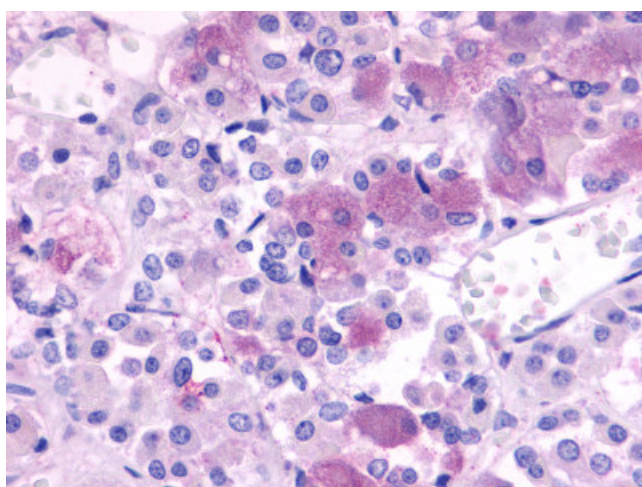
Product Type:	Primary Antibodies
Applications:	IHC
Recommended Dilution:	IHC-P (6 - 12 µg/ml)
Reactivity:	Gorilla, Human, Gibbon (Predicted: Monkey, Mouse, Rat, Bovine, Horse)
Host:	Rabbit
Isotype:	IgG
Clonality:	Polyclonal
Immunogen:	NPBWR1 / GPR7 antibody was raised against synthetic 19 amino acid peptide from 2nd extracellular domain of human NPBWR1. Percent identity with other species by BLAST analysis: Human, Gorilla, Gibbon, Monkey, Elephant, Panda (100%); Marmoset, Mouse, Rat, Bovine, Horse (95%); Rabbit (84%).
Formulation:	PBS, 0.1% sodium azide.
Concentration:	lot specific
Purification:	Immunoaffinity Chromatography
Conjugation:	Unconjugated
Storage:	Store at -20°C as received.
Stability:	Stable for 12 months from date of receipt.
Gene Name:	neuropeptides B/W receptor 1
Database Link:	NP_005276 Entrez Gene 226304 MouseEntrez Gene 297795 RatEntrez Gene 710519 MonkeyEntrez Gene 2831 Human P48145
Synonyms:	GPR7
Note:	Specific for Human NPBWR1. BLAST analysis of the peptide immunogen showed no homology with other human proteins.
Protein Families:	Druggable Genome, GPCR, Transmembrane
Protein Pathways:	Neuroactive ligand-receptor interaction



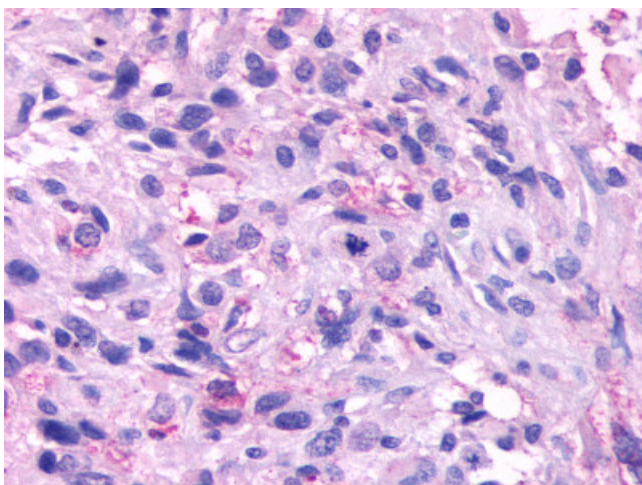
[View online »](#)

Product images:

Anti-NPBWR1 / GPR7 antibody IHC of human Skin, Melanoma. Immunohistochemistry of formalin-fixed, paraffin-embedded tissue after heat-induced antigen retrieval.



Anti-NPBWR1 antibody IHC of human brain, pituitary. Immunohistochemistry of formalin-fixed, paraffin-embedded tissue after heat-induced antigen retrieval.



Anti-NPBWR1 / GPR7 antibody IHC of human Brain, Glioblastoma. Immunohistochemistry of formalin-fixed, paraffin-embedded tissue after heat-induced antigen retrieval.