

Product datasheet for **TA317043**

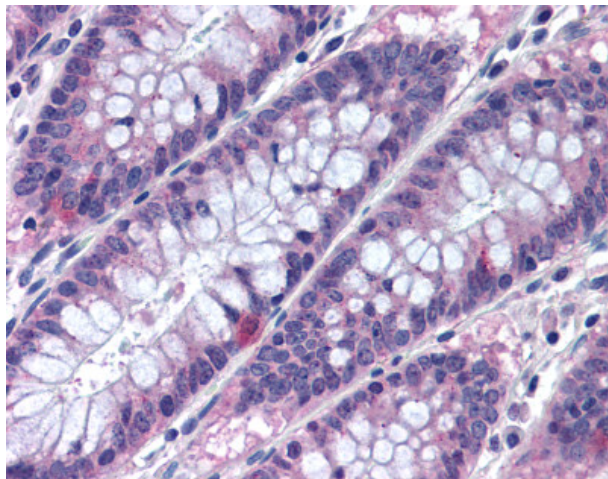
MTSS1 Rabbit Polyclonal Antibody

Product data:

Product Type:	Primary Antibodies
Applications:	IHC
Recommended Dilution:	IHC-P (10 µg/ml), WB (1 - 4 µg/ml)
Reactivity:	Bovine, Chimpanzee, Dog, Human, Mouse, Rat, Horse
Host:	Rabbit
Isotype:	IgG
Clonality:	Polyclonal
Immunogen:	MTSS1 / MIM antibody was raised against synthetic peptide from human MTSS1.
Formulation:	PBS, 0.05% BSA, 0.05% sodium azide.
Concentration:	lot specific
Purification:	Protein G Column
Conjugation:	Unconjugated
Storage:	Store at -20°C as received.
Stability:	Stable for 12 months from date of receipt.
Gene Name:	metastasis suppressor 1
Database Link:	NP_055566 Entrez Gene 211401 Mouse Entrez Gene 362918 Rat Entrez Gene 482037 Dog Entrez Gene 9788 Human O43312
Synonyms:	MIM; MIMA; MIMB
Note:	Specific for A portion of amino acid 670-720 of human MTSS1 protein
Protein Families:	Druggable Genome



[View online »](#)

Product images:

Anti-MTSS1 antibody IHC of human colon. Immunohistochemistry of formalin-fixed, paraffin-embedded tissue after heat-induced antigen retrieval. Antibody concentration 10 ug/ml.