

Product datasheet for **TA317038**

GPCR MRGX2 (MRGPRX2) Rabbit Polyclonal Antibody

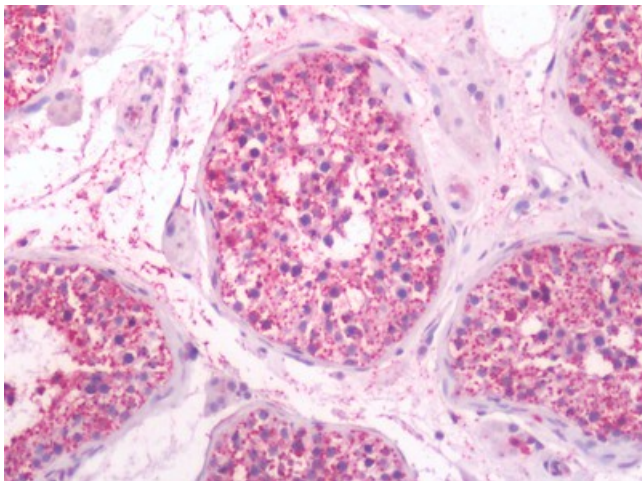
Product data:

Product Type:	Primary Antibodies
Applications:	IHC
Recommended Dilution:	ELISA, IHC-P (10 - 20 µg/ml)
Reactivity:	Chimpanzee, Gorilla, Human
Host:	Rabbit
Isotype:	IgG
Clonality:	Polyclonal
Immunogen:	MRGPRX2 / MRGX2 antibody was raised against synthetic 16 amino acid peptide from C-terminal cytoplasmic domain of human MRGPRX2 / MRGX2. Percent identity with other species by BLAST analysis: Human, Chimpanzee, Gorilla (100%); Orangutan (94%); Gibbon, Monkey (88%).
Formulation:	PBS, 0.1% sodium azide.
Concentration:	lot specific
Purification:	Immunoaffinity Chromatography
Conjugation:	Unconjugated
Storage:	Store at -20°C as received.
Stability:	Stable for 12 months from date of receipt.
Gene Name:	MAS related GPR family member X2
Database Link:	NP_473371 Entrez Gene 117194 Human Q96LB1
Synonyms:	MGRG3; MRGX2
Note:	Specific for Human MRGPRX2 / MRGX2. BLAST analysis of the peptide immunogen showed no homology with other human proteins.
Protein Families:	Druggable Genome, GPCR, Transmembrane

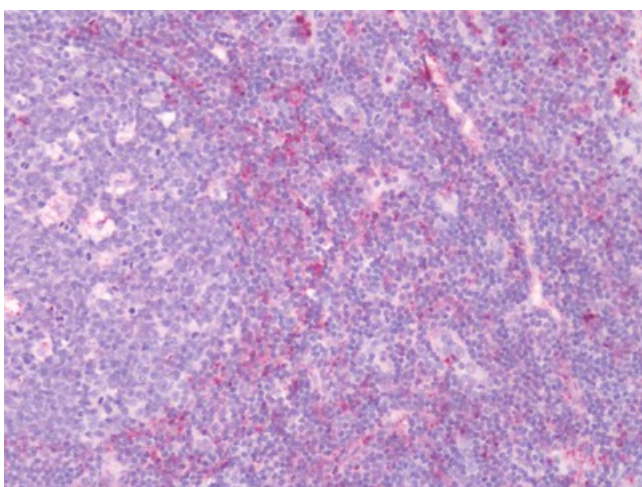


[View online »](#)

Product images:



Human Testis: Formalin-Fixed, Paraffin-Embedded (FFPE)



Human Tonsil: Formalin-Fixed, Paraffin-Embedded (FFPE)