

Product datasheet for **TA317031**

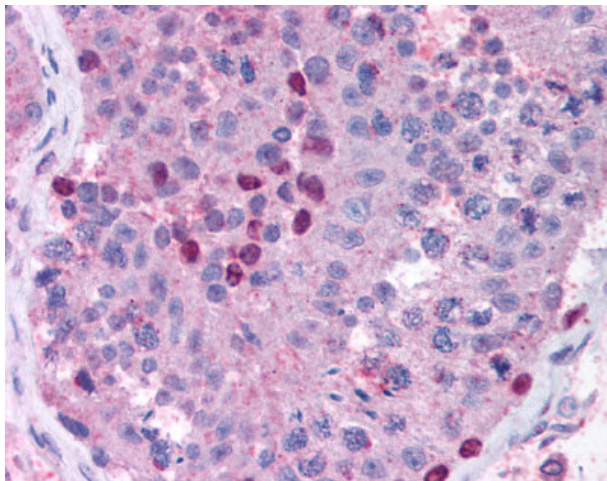
MMP28 Rabbit Polyclonal Antibody

Product data:

Product Type:	Primary Antibodies
Applications:	IHC
Recommended Dilution:	ELISA (1:000 - 1:1000), IHC-P (10 µg/ml)
Reactivity:	Human
Host:	Rabbit
Isotype:	IgG
Clonality:	Polyclonal
Immunogen:	MMP28 antibody was raised against synthetic peptide from human MMP28.
Formulation:	PBS, 0.1% sodium azide.
Concentration:	lot specific
Purification:	Protein G Column
Conjugation:	Unconjugated
Storage:	Store at -20°C as received.
Stability:	Stable for 12 months from date of receipt.
Gene Name:	matrix metalloproteinase 28
Database Link:	NP_116568 Entrez Gene 79148 Human Q9H239
Synonyms:	EPILYSIN; MM28; MMP-25; MMP-28; MMP25
Note:	Specific for Amino acids 298 to 312 of human MMP28
Protein Families:	Druggable Genome, Protease, Secreted Protein



[View online »](#)

Product images:

Anti-MMP28 antibody IHC of human testis. Immunohistochemistry of formalin-fixed, paraffin-embedded tissue after heat-induced antigen retrieval. Antibody concentration 10 ug/ml.