

Product datasheet for **TA317027**

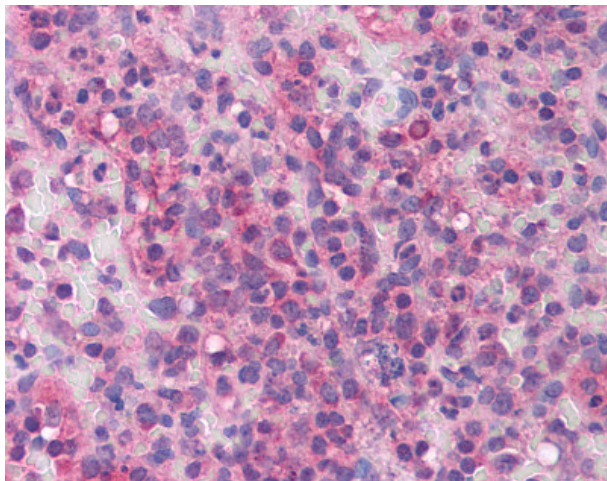
AF9 (MLLT3) Rabbit Polyclonal Antibody

Product data:

| | |
|-----------------------|---|
| Product Type: | Primary Antibodies |
| Applications: | IHC |
| Recommended Dilution: | ELISA (1:000 - 1:1000), IHC-P (5 µg/ml) |
| Reactivity: | Human |
| Host: | Rabbit |
| Isotype: | IgG |
| Clonality: | Polyclonal |
| Immunogen: | MLLT3 / AF9 antibody was raised against synthetic peptide from human MLLT3. |
| Formulation: | PBS, 0.1% sodium azide. |
| Concentration: | lot specific |
| Purification: | Protein G Column |
| Conjugation: | Unconjugated |
| Storage: | Store at -20°C as received. |
| Stability: | Stable for 12 months from date of receipt. |
| Gene Name: | myeloid/lymphoid or mixed-lineage leukemia; translocated to, 3 |
| Database Link: | NP_004520 Entrez Gene 4300 Human P42568 |
| Synonyms: | AF9; YEATS3 |
| Note: | Specific for Amino acids 486 to 502 of human MLLT3 |
| Protein Families: | Transcription Factors |



[View online »](#)

Product images:

Anti-MLLT3 antibody IHC of human spleen. Immunohistochemistry of formalin-fixed, paraffin-embedded tissue after heat-induced antigen retrieval. Antibody concentration 5 ug/ml.