

## Product datasheet for **TA317018**

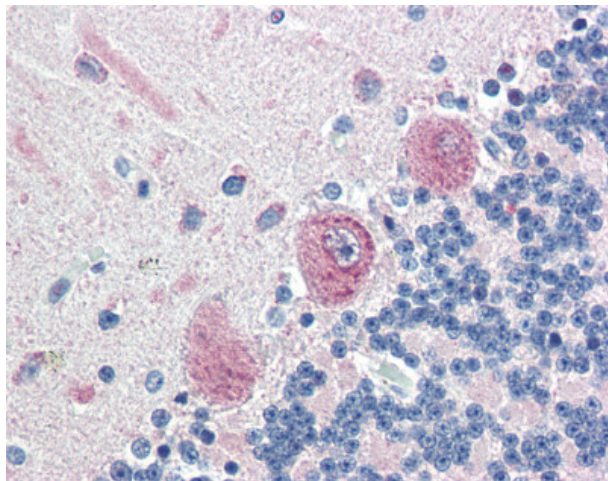
### Malectin (MLEC) Rabbit Polyclonal Antibody

#### Product data:

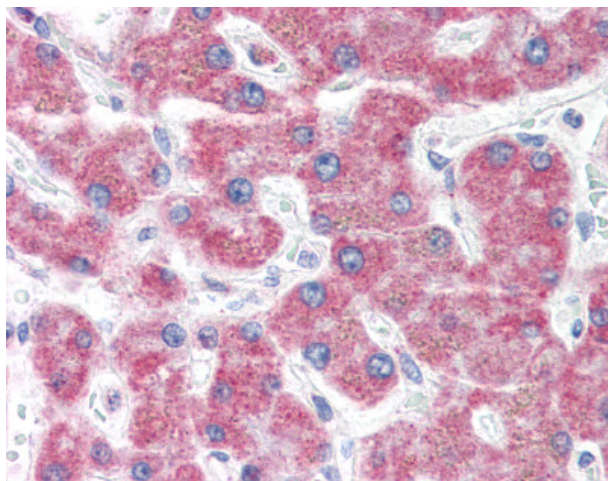
Product Type:	Primary Antibodies
Applications:	IHC
Recommended Dilution:	IHC-P (5 µg/ml)
Reactivity:	Bat, Bovine, Dog, Gorilla, Human, Monkey, Mouse, Pig, Rabbit, Rat, Gibbon, Horse
Host:	Rabbit
Isotype:	IgG
Clonality:	Polyclonal
Immunogen:	KIAA0152 / MLEC antibody was raised against synthetic 15 amino acid peptide from N-terminus of human MLEC. Percent identity with other species by BLAST analysis: Human, Gorilla, Gibbon, Monkey, Marmoset, Mouse, Rat, Bovine, Dog, Bat, Elephant, Panda, Horse, Rabbit, Pig, Pufferfish (100%); Chicken, Xenopus (87%); Stickleback, Tick (80%).
Formulation:	PBS, 0.1% sodium azide.
Concentration:	lot specific
Purification:	Immunoaffinity Chromatography
Conjugation:	Unconjugated
Storage:	Store at -20°C as received.
Stability:	Stable for 12 months from date of receipt.
Gene Name:	malectin
Database Link:	<a href="#">NP_055545</a> <a href="#">Entrez Gene 109154</a> <a href="#">MouseEntrez Gene 304543</a> <a href="#">RatEntrez Gene 609274</a> <a href="#">DogEntrez Gene 697934</a> <a href="#">MonkeyEntrez Gene 9761</a> <a href="#">Human Q14165</a>
Synonyms:	KIAA0152
Note:	Specific for Human MLEC. BLAST analysis of the peptide immunogen showed no homology with other human proteins.
Protein Families:	Transmembrane



[View online »](#)

**Product images:**

Anti-MLEC antibody IHC of human brain, cerebellum. Immunohistochemistry of formalin-fixed, paraffin-embedded tissue after heat-induced antigen retrieval.



Anti-MLEC antibody IHC of human liver. Immunohistochemistry of formalin-fixed, paraffin-embedded tissue after heat-induced antigen retrieval.