

Product datasheet for **TA317015**

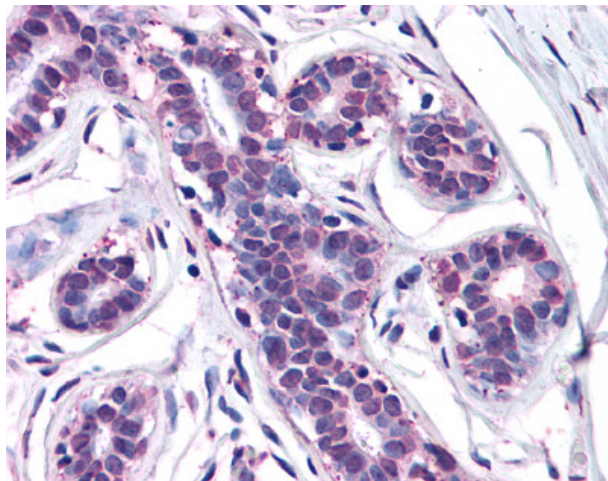
MF12 (MELTF) Rabbit Polyclonal Antibody

Product data:

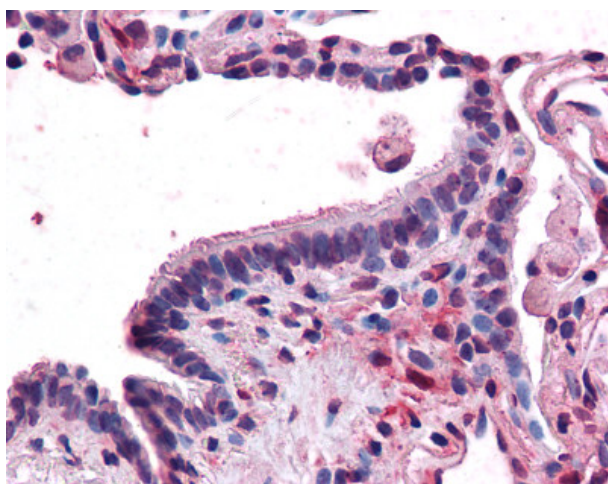
Product Type:	Primary Antibodies
Applications:	IHC
Recommended Dilution:	IHC-P (15 - 20 µg/ml)
Reactivity:	Dog, Gorilla, Human, Monkey, Mouse, Rabbit, Gibbon, Horse (Predicted: Bovine, Hamster, Pig)
Host:	Rabbit
Isotype:	IgG
Clonality:	Polyclonal
Immunogen:	MF12 / p97 / Melanotransferrin antibody was raised against synthetic 15 amino acid peptide from N-terminus of human MF12. Percent identity with other species by BLAST analysis: Human, Gorilla, Gibbon, Marmoset, Mouse, Dog, Elephant, Panda, Horse, Rabbit (100%); Bovine, Hamster, Pig (93%); Rat, Turkey, Chicken, Platypus (87%).
Formulation:	PBS, 0.1% sodium azide.
Concentration:	lot specific
Purification:	Immunoaffinity Chromatography
Conjugation:	Unconjugated
Storage:	Store at -20°C as received.
Stability:	Stable for 12 months from date of receipt.
Gene Name:	melanotransferrin
Database Link:	NP_005920 Entrez Gene 30060 Mouse Entrez Gene 488035 Dog Entrez Gene 707618 Monkey Entrez Gene 4241 Human P08582
Synonyms:	CD228; MAP97; MTF; MTF1
Note:	Specific for Human MF12. BLAST analysis of the peptide immunogen showed no homology with other human proteins.
Protein Families:	Druggable Genome



[View online »](#)

Product images:

Anti-MF12 antibody IHC of human breast. Immunohistochemistry of formalin-fixed, paraffin-embedded tissue after heat-induced antigen retrieval.



Anti-MF12 antibody IHC of human lung, respiratory epithelium. Immunohistochemistry of formalin-fixed, paraffin-embedded tissue after heat-induced antigen retrieval.