

## Product datasheet for **TA317013**

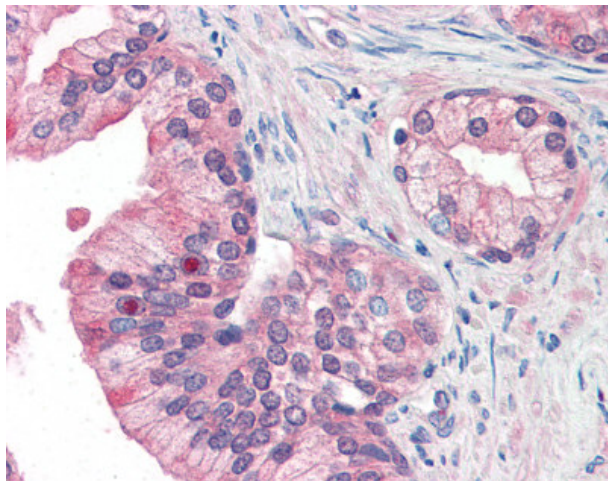
### MF12 (MELTF) Rabbit Polyclonal Antibody

#### Product data:

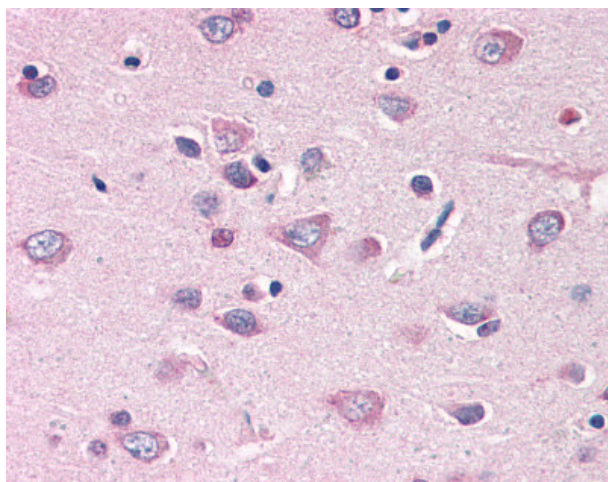
Product Type:	Primary Antibodies
Applications:	IHC
Recommended Dilution:	IHC-P (15 µg/ml)
Reactivity:	Bat, Gorilla, Human, Monkey, Mouse, Rat, Gibbon, Hamster, Horse (Predicted: Bovine, Pig, Rabbit)
Host:	Rabbit
Isotype:	IgG
Clonality:	Polyclonal
Immunogen:	MF12 / p97 / Melanotransferrin antibody was raised against synthetic 15 amino acid peptide from N-terminus of human MF12. Percent identity with other species by BLAST analysis: Human, Gorilla, Gibbon, Monkey, Marmoset, Mouse, Rat, Bat, Hamster, Elephant, Panda, Horse (100%); Bovine, Rabbit, Pig (93%); Chicken, Platypus (87%); Dog, Turkey, Medaka, Zebrafish (80%).
Formulation:	PBS, 0.1% sodium azide.
Concentration:	lot specific
Purification:	Immunoaffinity Chromatography
Conjugation:	Unconjugated
Storage:	Store at -20°C as received.
Stability:	Stable for 12 months from date of receipt.
Gene Name:	melanotransferrin
Database Link:	<a href="#">NP_005920</a> <a href="#">Entrez Gene 30060 Mouse</a> <a href="#">Entrez Gene 288038 Rat</a> <a href="#">Entrez Gene 707618 Monkey</a> <a href="#">Entrez Gene 4241 Human</a> <a href="#">P08582</a>
Synonyms:	CD228; MAP97; MTF; MTF1
Note:	Specific for Human MF12. BLAST analysis of the peptide immunogen showed no homology with other human proteins.
Protein Families:	Druggable Genome



[View online »](#)

**Product images:**

Anti-MFI2 antibody IHC of human prostate. Immunohistochemistry of formalin-fixed, paraffin-embedded tissue after heat-induced antigen retrieval.



Anti-MFI2 antibody IHC of human brain, cortex. Immunohistochemistry of formalin-fixed, paraffin-embedded tissue after heat-induced antigen retrieval.