

## Product datasheet for **TA316988**

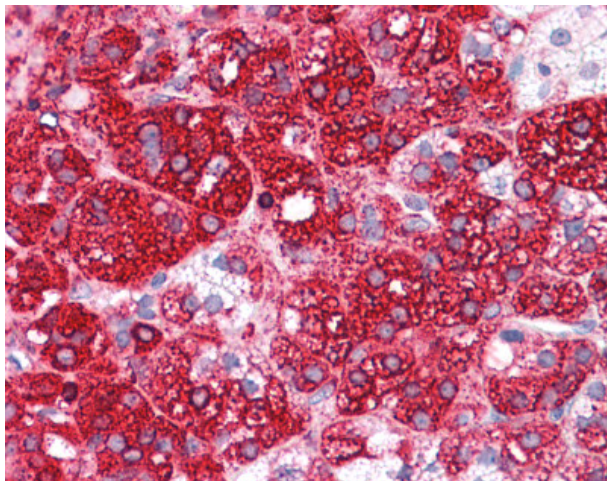
### LYPD3 Rabbit Polyclonal Antibody

#### Product data:

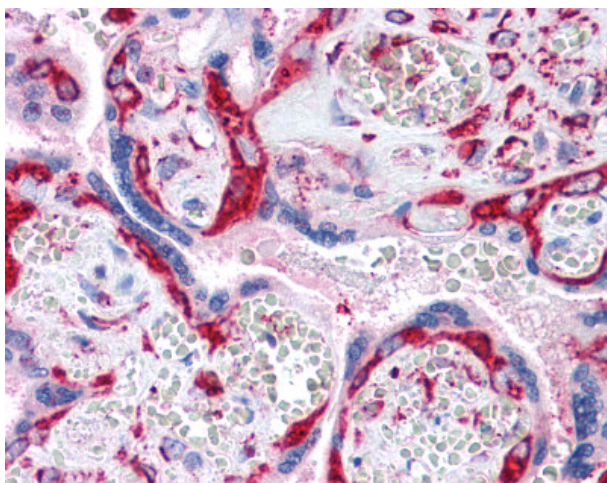
Product Type:	Primary Antibodies
Applications:	IHC
Recommended Dilution:	IHC-P (10 - 12.5 µg/ml)
Reactivity:	Gorilla, Human, Gibbon (Predicted: Rabbit)
Host:	Rabbit
Isotype:	IgG
Clonality:	Polyclonal
Immunogen:	C4.4A / LYPD3 antibody was raised against synthetic 14 amino acid peptide from internal region of human LYPD3. Percent identity with other species by BLAST analysis: Human, Gorilla, Gibbon (100%); Rabbit (93%); Marmoset, Dog, Panda, Horse (86%).
Formulation:	PBS, 0.1% sodium azide.
Concentration:	lot specific
Purification:	Immunoaffinity Chromatography
Conjugation:	Unconjugated
Storage:	Store at -20°C as received.
Stability:	Stable for 12 months from date of receipt.
Gene Name:	LY6/PLAUR domain containing 3
Database Link:	<a href="#">NP_055215</a> <a href="#">Entrez Gene 27076 Human</a> <a href="#">O95274</a>
Synonyms:	C4.4A
Note:	Specific for Human LYPD3. BLAST analysis of the peptide immunogen showed no homology with other human proteins.
Protein Families:	Druggable Genome



[View online »](#)

**Product images:**

Anti-LYPD3 antibody IHC of human adrenal. Immunohistochemistry of formalin-fixed, paraffin-embedded tissue after heat-induced antigen retrieval.



Anti-LYPD3 antibody IHC of human placenta. Immunohistochemistry of formalin-fixed, paraffin-embedded tissue after heat-induced antigen retrieval.