

Product datasheet for **TA316987**

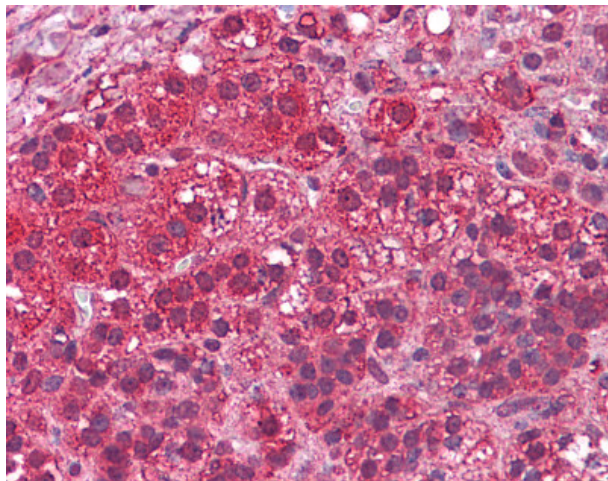
LYPD3 Rabbit Polyclonal Antibody

Product data:

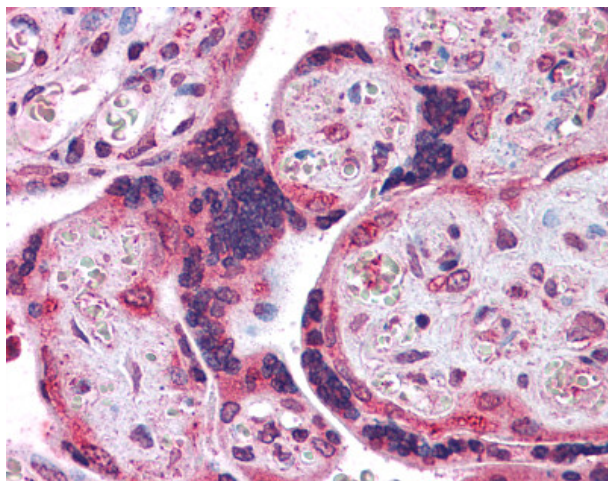
Product Type:	Primary Antibodies
Applications:	IHC
Recommended Dilution:	IHC-P (10 - 12.5 µg/ml)
Reactivity:	Dog, Gorilla, Human, Rabbit, Gibbon, Horse (Predicted: Monkey, Mouse, Rat, Pig)
Host:	Rabbit
Isotype:	IgG
Clonality:	Polyclonal
Immunogen:	C4.4A / LYPD3 antibody was raised against synthetic 14 amino acid peptide from N-terminus of human LYPD3. Percent identity with other species by BLAST analysis: Human, Gorilla, Gibbon, Dog, Elephant, Horse, Rabbit (100%); Marmoset, Mouse, Rat, Panda, Pig (93%); Bovine (86%).
Formulation:	PBS, 0.1% sodium azide.
Concentration:	lot specific
Purification:	Immunoaffinity Chromatography
Conjugation:	Unconjugated
Storage:	Store at -20°C as received.
Stability:	Stable for 12 months from date of receipt.
Gene Name:	LY6/PLAUR domain containing 3
Database Link:	NP_055215 Entrez Gene 60378 Rat Entrez Gene 72434 Mouse Entrez Gene 484471 Dog Entrez Gene 718197 Monkey Entrez Gene 27076 Human O95274
Synonyms:	C4.4A
Note:	Specific for Human LYPD3. BLAST analysis of the peptide immunogen showed no homology with other human proteins.
Protein Families:	Druggable Genome



[View online »](#)

Product images:

Anti-LYPD3 antibody IHC of human adrenal. Immunohistochemistry of formalin-fixed, paraffin-embedded tissue after heat-induced antigen retrieval.



Anti-LYPD3 antibody IHC of human placenta. Immunohistochemistry of formalin-fixed, paraffin-embedded tissue after heat-induced antigen retrieval.