

Product datasheet for **TA316985**

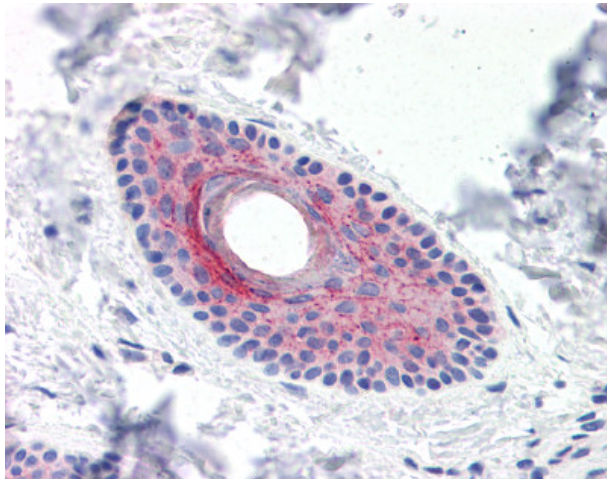
LYPD3 Rabbit Polyclonal Antibody

Product data:

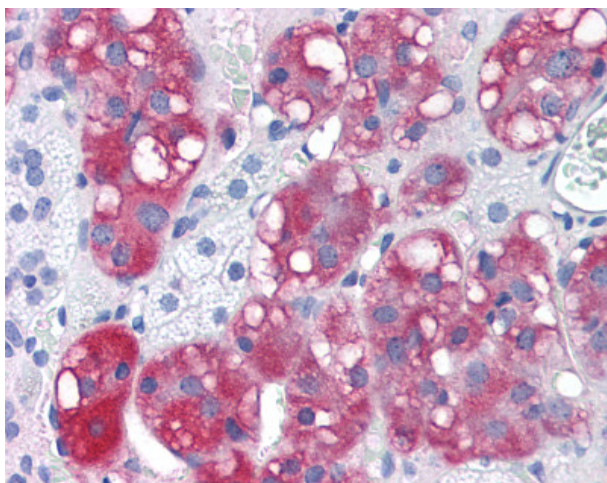
| | |
|-----------------------|---|
| Product Type: | Primary Antibodies |
| Applications: | IHC |
| Recommended Dilution: | IHC-P (15 µg/ml) |
| Reactivity: | Gorilla, Human, Gibbon |
| Host: | Rabbit |
| Isotype: | IgG |
| Clonality: | Polyclonal |
| Immunogen: | C4.4A / LYPD3 antibody was raised against synthetic 13 amino acid peptide from C-terminus of human LYPD3. Percent identity with other species by BLAST analysis: Human, Gorilla, Gibbon (100%); Panda (92%); Mouse, Rat, Horse (85%). |
| Formulation: | PBS, 0.1% sodium azide. |
| Concentration: | lot specific |
| Purification: | Immunoaffinity Chromatography |
| Conjugation: | Unconjugated |
| Storage: | Store at -20°C as received. |
| Stability: | Stable for 12 months from date of receipt. |
| Gene Name: | LY6/PLAUR domain containing 3 |
| Database Link: | NP_055215 Entrez Gene 27076 Human O95274 |
| Synonyms: | C4.4A |
| Note: | Specific for Human LYPD3. BLAST analysis of the peptide immunogen showed no homology with other human proteins. |
| Protein Families: | Druggable Genome |



[View online »](#)

Product images:

Anti-LYPD3 antibody IHC of human skin, hair follicle. Immunohistochemistry of formalin-fixed, paraffin-embedded tissue after heat-induced antigen retrieval.



Anti-LYPD3 antibody IHC of human adrenal. Immunohistochemistry of formalin-fixed, paraffin-embedded tissue after heat-induced antigen retrieval.