

## Product datasheet for **TA316984**

### Leukotriene B4 Receptor 2 (LTB4R2) Rabbit Polyclonal Antibody

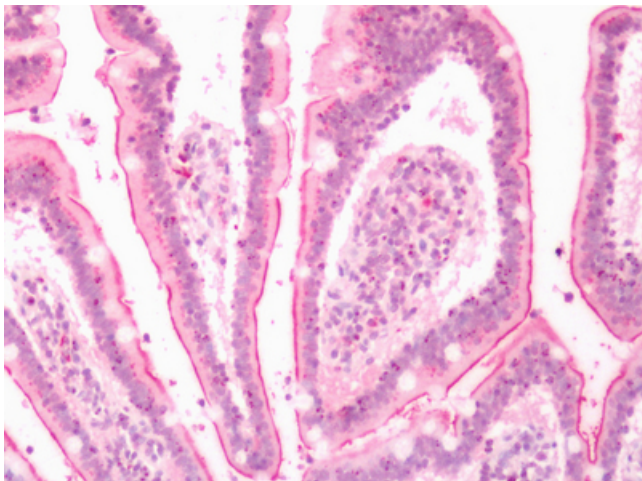
#### Product data:

Product Type:	Primary Antibodies
Applications:	IHC
Recommended Dilution:	IHC-P (10 - 20 µg/ml)
Reactivity:	Gorilla, Human
Host:	Rabbit
Isotype:	IgG
Clonality:	Polyclonal
Immunogen:	LTB4R2 / BLT2 antibody was raised against synthetic 19 amino acid peptide from N-terminal extracellular domain of human LTB4R2. Percent identity with other species by BLAST analysis: Human, Gorilla (100%).
Formulation:	PBS, 0.1% sodium azide.
Concentration:	lot specific
Purification:	Immunoaffinity Chromatography
Conjugation:	Unconjugated
Storage:	Store at -20°C as received.
Stability:	Stable for 12 months from date of receipt.
Gene Name:	leukotriene B4 receptor 2
Database Link:	<a href="#">NP_062813</a> <a href="#">Entrez Gene 56413 Human</a> <a href="#">Q9NPC1</a>
Synonyms:	BLT2; BLTR2; JULF2; KPG_004; LTB4-R 2; LTB4-R2; NOP9
Note:	Specific for Human LTB4R2. BLAST analysis of the peptide immunogen showed no homology with other human proteins, except PPM2C (47%).
Protein Families:	Druggable Genome, GPCR, Transmembrane
Protein Pathways:	Calcium signaling pathway, Neuroactive ligand-receptor interaction



[View online »](#)

**Product images:**



Human Small Intestine: Formalin-Fixed, Paraffin-Embedded (FFPE)