

Product datasheet for **TA316982**

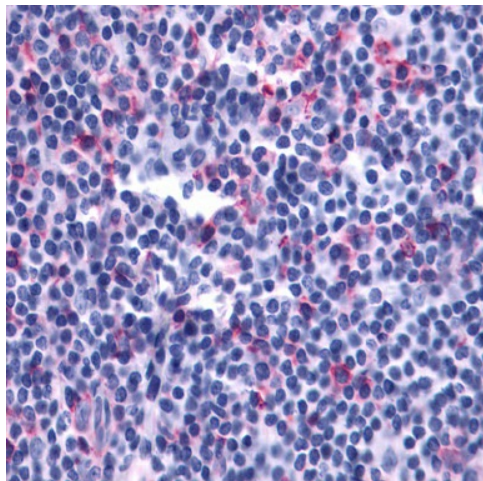
Leukotriene B4 Receptor 2 (LTB4R2) Rabbit Polyclonal Antibody

Product data:

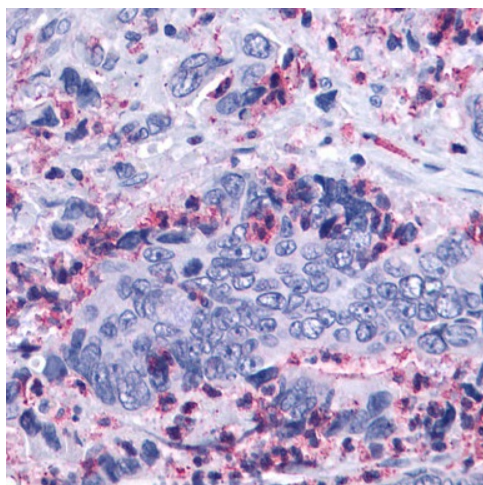
Product Type:	Primary Antibodies
Applications:	IHC
Recommended Dilution:	IHC-P (26 µg/ml)
Reactivity:	Gorilla, Human, Monkey
Host:	Rabbit
Isotype:	IgG
Clonality:	Polyclonal
Immunogen:	LTB4R2 / BLT2 antibody was raised against synthetic 16 amino acid peptide from 3rd cytoplasmic domain of human LTB4R2. Percent identity with other species by BLAST analysis: Human, Gorilla, Monkey, Marmoset (100%); Mouse, Rat, Bat (88%); Elephant (81%).
Formulation:	PBS, 0.1% sodium azide.
Concentration:	lot specific
Purification:	Immunoaffinity Chromatography
Conjugation:	Unconjugated
Storage:	Store at -20°C as received.
Stability:	Stable for 12 months from date of receipt.
Gene Name:	leukotriene B4 receptor 2
Database Link:	NP_062813 Entrez Gene 716012 Monkey Entrez Gene 56413 Human Q9NPC1
Synonyms:	BLT2; BLTR2; JULF2; KPG_004; LTB4-R 2; LTB4-R2; NOP9
Note:	Specific for Human LTB4R2. BLAST analysis of the peptide immunogen showed no homology with other human proteins.
Protein Families:	Druggable Genome, GPCR, Transmembrane
Protein Pathways:	Calcium signaling pathway, Neuroactive ligand-receptor interaction



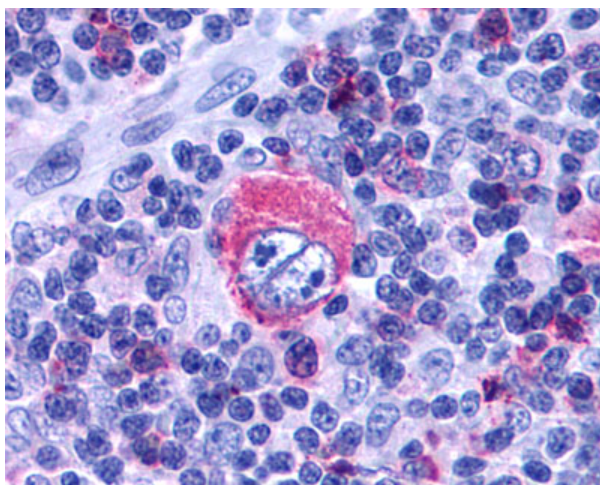
[View online »](#)

Product images:

Anti-LTB4R2 antibody IHC of human tonsil.
Immunohistochemistry of formalin-fixed,
paraffin-embedded tissue after heat-induced
antigen retrieval.



Anti-LTB4R2 / BLT2 antibody IHC of human Colon,
Carcinoma and Leukocytes.
Immunohistochemistry of formalin-fixed,
paraffin-embedded tissue after heat-induced
antigen retrieval.



Anti-LTB4R2 / BLT2 antibody IHC of human Lymph Node, Hodgkins Lymphoma. Immunohistochemistry of formalin-fixed, paraffin-embedded tissue after heat-induced antigen retrieval.