

## Product datasheet for **TA316978**

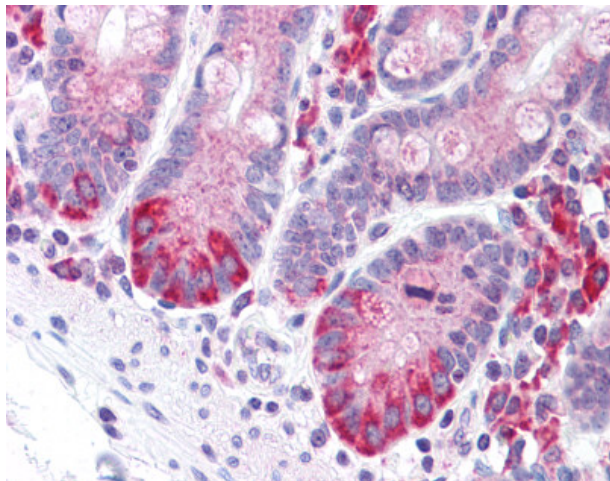
### LRRN4 Rabbit Polyclonal Antibody

#### Product data:

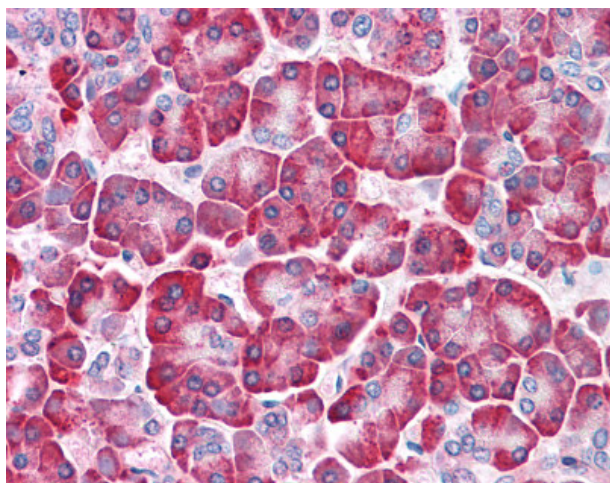
Product Type:	Primary Antibodies
Applications:	IHC
Recommended Dilution:	IHC-P (2.5 µg/ml)
Reactivity:	Gorilla, Human
Host:	Rabbit
Isotype:	IgG
Clonality:	Polyclonal
Immunogen:	LRRN4 / C20orf75 antibody was raised against synthetic 17 amino acid peptide from C-terminus of human LRRN4 / C20orf75. Percent identity with other species by BLAST analysis: Human, Gorilla (100%); Gibbon, Monkey, Marmoset, Panda (88%); Rabbit (82%).
Formulation:	PBS, 0.1% sodium azide.
Concentration:	lot specific
Purification:	Immunoaffinity Chromatography
Conjugation:	Unconjugated
Storage:	Store at -20°C as received.
Stability:	Stable for 12 months from date of receipt.
Gene Name:	leucine rich repeat neuronal 4
Database Link:	<a href="#">NP_689824</a> <a href="#">Entrez Gene 164312 Human</a> <a href="#">Q8WUT4</a>
Synonyms:	C20orf75; dj1056H1.1; NLRR-4; NLRR4
Note:	Specific for Human LRRN4 / C20orf75. BLAST analysis of the peptide immunogen showed no homology with other human proteins.
Protein Families:	Transmembrane



[View online »](#)

**Product images:**

Anti-LRRN4 / C20orf75 antibody IHC of human small intestine. Immunohistochemistry of formalin-fixed, paraffin-embedded tissue after heat-induced antigen retrieval.



Anti-LRRN4 / C20orf75 antibody IHC of human pancreas. Immunohistochemistry of formalin-fixed, paraffin-embedded tissue after heat-induced antigen retrieval.