

Product datasheet for **TA316976**

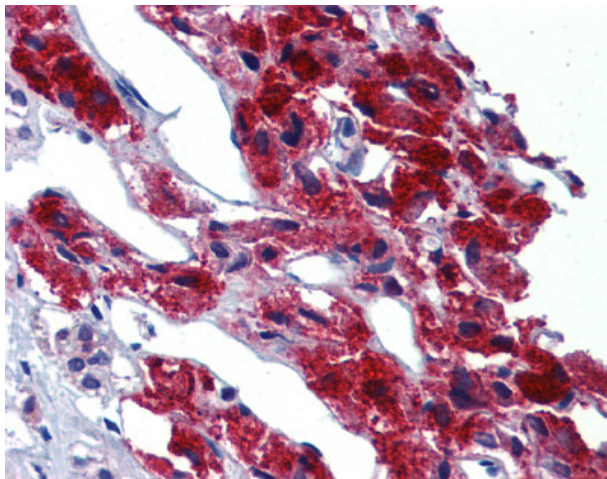
LRRN4 Rabbit Polyclonal Antibody

Product data:

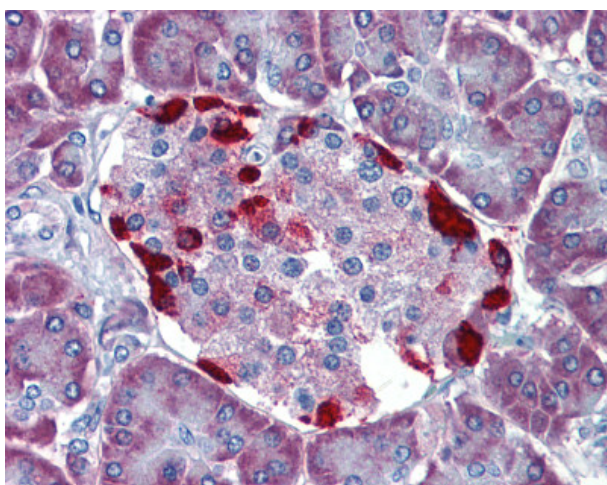
Product Type:	Primary Antibodies
Applications:	IHC
Recommended Dilution:	IHC-P (10 µg/ml)
Reactivity:	Chimpanzee, Gorilla, Human, Orang-Utan (Predicted: Monkey)
Host:	Rabbit
Isotype:	IgG
Clonality:	Polyclonal
Immunogen:	LRRN4 / C20orf75 antibody was raised against synthetic 16 amino acid peptide from N-Terminus of human LRRN4 / C20orf75. Percent identity with other species by BLAST analysis: Human, Chimpanzee, Gorilla, Orangutan (100%); Marmoset (94%).
Formulation:	PBS, 0.1% sodium azide.
Concentration:	lot specific
Purification:	Immunoaffinity Chromatography
Conjugation:	Unconjugated
Storage:	Store at -20°C as received.
Stability:	Stable for 12 months from date of receipt.
Gene Name:	leucine rich repeat neuronal 4
Database Link:	NP_689824 Entrez Gene 718283 Monkey Entrez Gene 164312 Human Q8WUT4
Synonyms:	C20orf75; dj1056H1.1; NLRR-4; NLRR4
Note:	Specific for Human LRRN4 / C20orf75. BLAST analysis of the peptide immunogen showed no homology with other human proteins, except SH2B1 (44%).
Protein Families:	Transmembrane



[View online »](#)

Product images:

Anti-LRRN4 / C20orf75 antibody IHC of human adrenal. Immunohistochemistry of formalin-fixed, paraffin-embedded tissue after heat-induced antigen retrieval.



Anti-LRRN4 / C20orf75 antibody IHC of human pancreas. Immunohistochemistry of formalin-fixed, paraffin-embedded tissue after heat-induced antigen retrieval.