

Product datasheet for **TA316971**

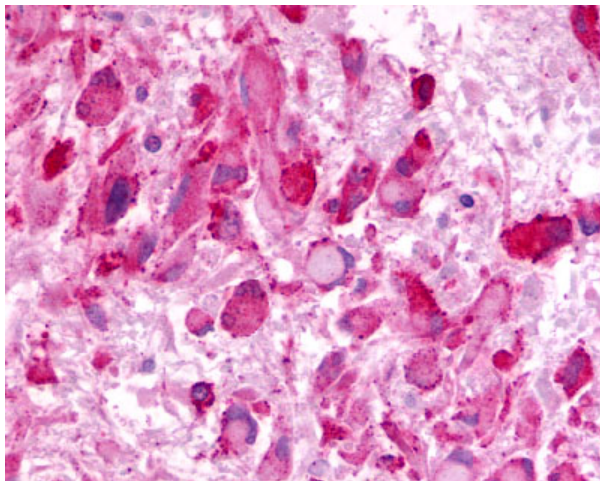
LPHN3 (ADGRL3) Rabbit Polyclonal Antibody

Product data:

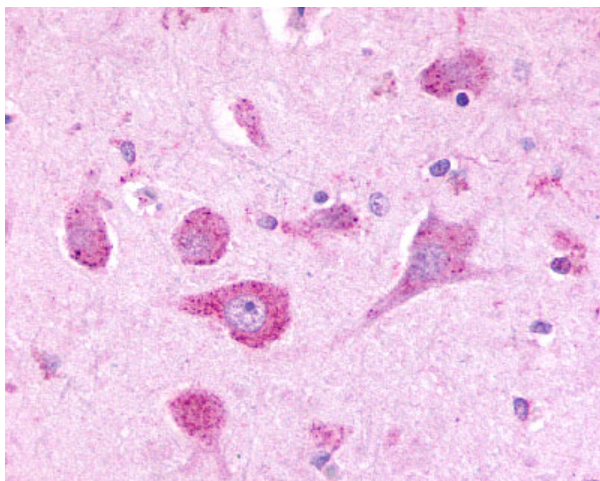
Product Type:	Primary Antibodies
Applications:	IHC
Recommended Dilution:	IHC-P (2 µg/ml)
Reactivity:	Bat, Chicken, Gorilla, Human, Monkey, Mouse, Rabbit, Rat, Horse (Predicted: Bovine)
Host:	Rabbit
Isotype:	IgG
Clonality:	Polyclonal
Immunogen:	LPHN3 / Latrophilin-3 antibody was raised against synthetic 19 amino acid peptide from C-terminus of human LPHN3. Percent identity with other species by BLAST analysis: Human, Gorilla, Monkey, Marmoset, Mouse, Rat, Bat, Elephant, Panda, Horse, Rabbit, Opossum, Turkey, Chicken, Lizard (100%); Bovine, Platypus (95%); Gibbon (89%).
Formulation:	PBS, 0.1% sodium azide.
Concentration:	lot specific
Purification:	Immunoaffinity Chromatography
Conjugation:	Unconjugated
Storage:	Store at -20°C as received.
Stability:	Stable for 12 months from date of receipt.
Gene Name:	adhesion G protein-coupled receptor L3
Database Link:	NP_056051 Entrez Gene 170641 RatEntrez Gene 319387 MouseEntrez Gene 712601 MonkeyEntrez Gene 23284 Human Q9HAR2
Synonyms:	CIRL3; CL3; LEC3; LPHN3
Note:	Specific for Human LPHN3. BLAST analysis of the peptide immunogen showed no homology with other human proteins.
Protein Families:	Druggable Genome, GPCR, Transmembrane



[View online »](#)

Product images:

Anti-LPHN3 / Latrophilin-3 antibody IHC of human Brain, Glioblastoma. Immunohistochemistry of formalin-fixed, paraffin-embedded tissue after heat-induced antigen retrieval.



Anti-LPHN3 antibody IHC of human brain, neurons. Immunohistochemistry of formalin-fixed, paraffin-embedded tissue after heat-induced antigen retrieval.