

## Product datasheet for **TA316970**

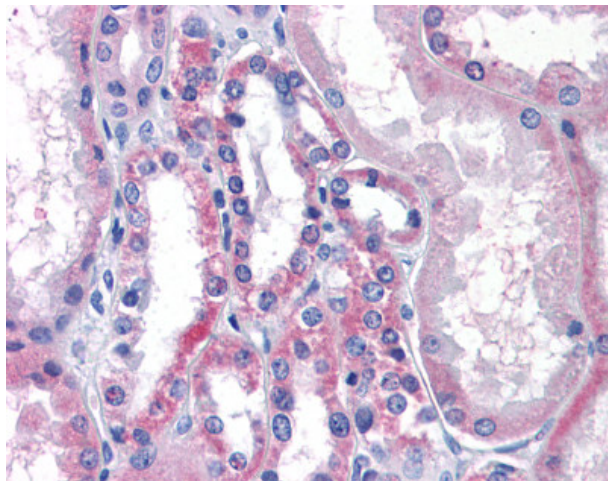
### LPCAT1 Rabbit Polyclonal Antibody

#### Product data:

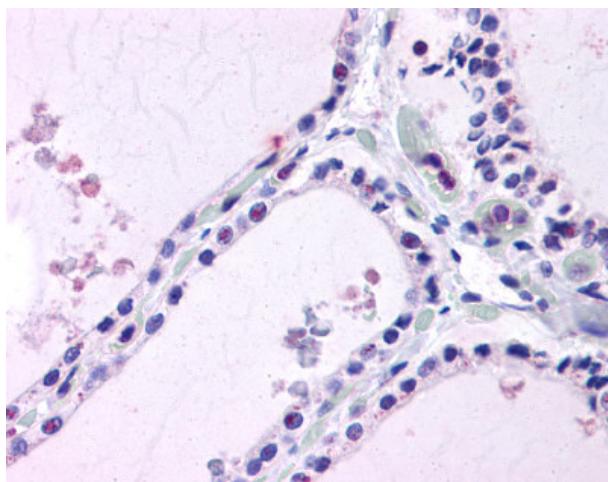
|                       |   |
|-----------------------|---|
| Product Type:         | Primary Antibodies  |
| Applications:         | IHC   |
| Recommended Dilution: | IHC-P (10 µg/ml)  |
| Reactivity:           | Chicken, Dog, Gorilla, Human, Monkey, Mouse, Pig, Rat, Zebrafish, Gibbon, Hamster<br>(Predicted: Bat, Bovine, Xenopus)  |
| Host:                 | Rabbit  |
| Isotype:              | IgG   |
| Clonality:            | Polyclonal  |
| Immunogen:            | LPCAT1 / AYTL2 antibody was raised against synthetic 15 amino acid peptide from internal region of human LPCAT1. Percent identity with other species by BLAST analysis: Human, Gorilla, Gibbon, Monkey, Marmoset, Mouse, Rat, Dog, Hamster, Pig, Opossum, Turkey, Chicken, Platypus, Zebrafish (100%); Bat, Bovine, Panda, Xenopus, Stickleback (93%); Pufferfish (87%); Horse (80%). |
| Formulation:          | PBS, 0.1% sodium azide.   |
| Concentration:        | lot specific  |
| Purification:         | Immunoaffinity Chromatography   |
| Conjugation:          | Unconjugated  |
| Storage:              | Store at -20°C as received.   |
| Stability:            | Stable for 12 months from date of receipt.  |
| Gene Name:            | lysophosphatidylcholine acyltransferase 1   |
| Database Link:        | <a href="#">NP_079106</a><br><a href="#">Entrez Gene 210992</a> <a href="#">MouseEntrez Gene 361467</a> <a href="#">RatEntrez Gene 488066</a> <a href="#">DogEntrez Gene 710144</a> <a href="#">MonkeyEntrez Gene 79888</a> <a href="#">Human Q8NF37</a>  |
| Synonyms:             | AGPAT9; AGPAT10; AYTL2; lpcat; LPCAT-1; lysoPAFAT; PFAAP3   |
| Note:                 | Specific for Human LPCAT1. BLAST analysis of the peptide immunogen showed no homology with other human proteins, except LPCAT2 (60%).   |
| Protein Families:     | Transmembrane   |



[View online »](#)

**Product images:**

Anti-LPCAT1 antibody IHC of human kidney. Immunohistochemistry of formalin-fixed, paraffin-embedded tissue after heat-induced antigen retrieval.



Anti-LPCAT1 antibody IHC of human thyroid. Immunohistochemistry of formalin-fixed, paraffin-embedded tissue after heat-induced antigen retrieval.