

Product datasheet for **TA316969**

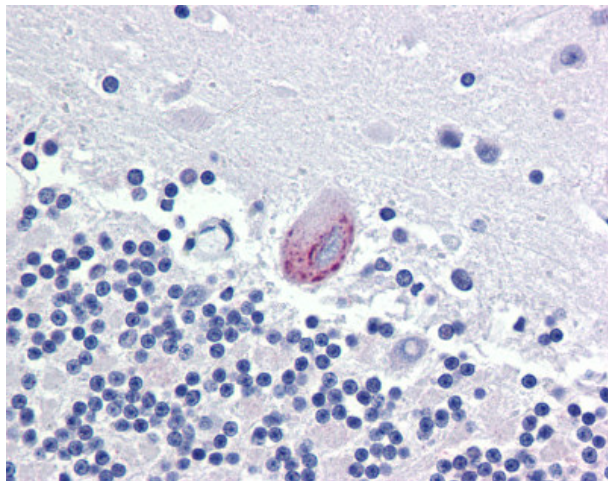
LPCAT1 Rabbit Polyclonal Antibody

Product data:

Product Type:	Primary Antibodies
Applications:	IHC
Recommended Dilution:	IHC-P (10 µg/ml)
Reactivity:	Gorilla, Human
Host:	Rabbit
Isotype:	IgG
Clonality:	Polyclonal
Immunogen:	LPCAT1 / AYTL2 antibody was raised against synthetic 14 amino acid peptide from internal region of human LPCAT1. Percent identity with other species by BLAST analysis: Human, Gorilla (100%); Gibbon (93%).
Formulation:	PBS, 0.1% sodium azide.
Concentration:	lot specific
Purification:	Immunoaffinity Chromatography
Conjugation:	Unconjugated
Storage:	Store at -20°C as received.
Stability:	Stable for 12 months from date of receipt.
Gene Name:	lysophosphatidylcholine acyltransferase 1
Database Link:	NP_079106 Entrez Gene 79888 Human Q8NF37
Synonyms:	AGPAT9; AGPAT10; AYTL2; lpcat; LPCAT-1; lysoPAFAT; PFAAP3
Note:	Specific for Human LPCAT1. BLAST analysis of the peptide immunogen showed no homology with other human proteins.
Protein Families:	Transmembrane



[View online »](#)

Product images:

Anti-LPCAT1 antibody IHC of human brain, cerebellum. Immunohistochemistry of formalin-fixed, paraffin-embedded tissue after heat-induced antigen retrieval.