

## Product datasheet for **TA316968**

### **P2Y9 (LPAR4) Rabbit Polyclonal Antibody**

#### **Product data:**

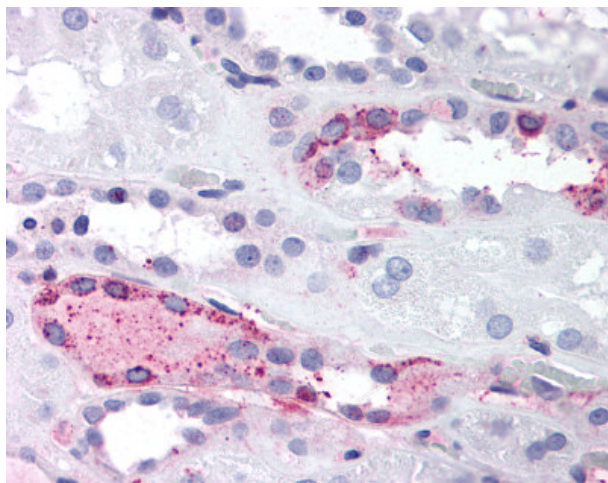
<b>Product Type:</b>	Primary Antibodies
<b>Applications:</b>	IHC
<b>Recommended Dilution:</b>	IHC-P (10 - 20 µg/ml)
<b>Reactivity:</b>	Bovine, Dog, Human, Pig, Rabbit, Gibbon (Predicted: Monkey, Mouse, Rat, Bat, Hamster, Horse)
<b>Host:</b>	Rabbit
<b>Isotype:</b>	IgG
<b>Clonality:</b>	Polyclonal
<b>Immunogen:</b>	LPAR4 / GPR23 antibody was raised against synthetic 18 amino acid peptide from C-Terminus of human LPAR4 / GPR23. Percent identity with other species by BLAST analysis: Human, Gibbon, Monkey, Elephant, Panda, Bovine, Dog, Rabbit, Pig (100%); Gorilla, Marmoset, Mouse, Rat, Hamster, Bat, Horse (94%); Opossum (89%).
<b>Formulation:</b>	PBS, 0.1% sodium azide.
<b>Concentration:</b>	lot specific
<b>Purification:</b>	Immunoaffinity Chromatography
<b>Conjugation:</b>	Unconjugated
<b>Storage:</b>	Store at -20°C as received.
<b>Stability:</b>	Stable for 12 months from date of receipt.
<b>Gene Name:</b>	lysophosphatidic acid receptor 4
<b>Database Link:</b>	<a href="#">NP_005287</a> <a href="#">Entrez Gene 78134</a> <a href="#">MouseEntrez Gene 302378</a> <a href="#">RatEntrez Gene 491978</a> <a href="#">DogEntrez Gene 707170</a> <a href="#">MonkeyEntrez Gene 2846</a> <a href="#">Human Q99677</a>
<b>Synonyms:</b>	GPR23; LPA4; P2RY9; P2Y5-LIKE; P2Y9
<b>Note:</b>	Specific for Human LPAR4 / GPR23. BLAST analysis of the peptide immunogen showed no homology with other human proteins, except GON4L (44%), YY1AP1 (44%).
<b>Protein Families:</b>	Druggable Genome, GPCR, Transmembrane



[View online »](#)

Protein Pathways: Neuroactive ligand-receptor interaction

**Product images:**



Anti-LPAR4 / GPR23 antibody IHC of human kidney. Immunohistochemistry of formalin-fixed, paraffin-embedded tissue after heat-induced antigen retrieval.