

Product datasheet for **TA316966**

P2Y9 (LPAR4) Rabbit Polyclonal Antibody

Product data:

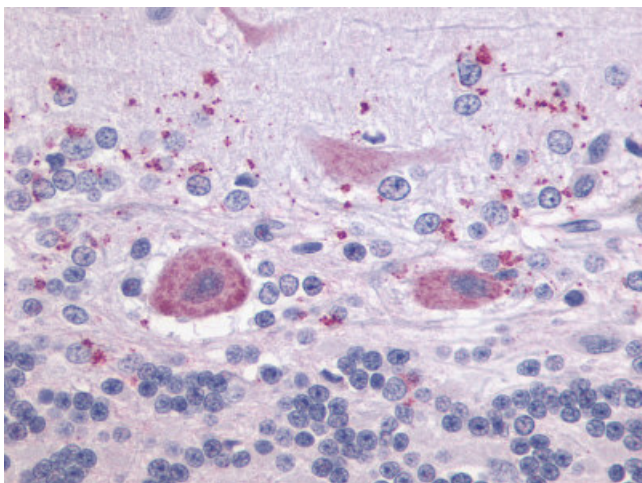
Product Type:	Primary Antibodies
Applications:	IHC
Recommended Dilution:	IHC-P (4 µg/ml)
Reactivity:	Bat, Dog, Gorilla, Human, Monkey, Mouse, Rabbit, Rat, Gibbon, Hamster, Horse (Predicted: Bovine, Pig, Chicken)
Host:	Rabbit
Isotype:	IgG
Clonality:	Polyclonal
Immunogen:	LPAR4 / GPR23 antibody was raised against synthetic 17 amino acid peptide from 3rd cytoplasmic domain of human LPAR4 / GPR23. Percent identity with other species by BLAST analysis: Human, Gorilla, Gibbon, Monkey, Marmoset, Mouse, Rat, Hamster, Elephant, Panda, Dog, Bat, Horse, Rabbit (100%); Bovine, Pig, Opossum, Turkey, Chicken (94%); Xenopus (88%).
Formulation:	PBS, 0.1% sodium azide.
Concentration:	lot specific
Purification:	Immunoaffinity Chromatography
Conjugation:	Unconjugated
Storage:	Store at -20°C as received.
Stability:	Stable for 12 months from date of receipt.
Gene Name:	lysophosphatidic acid receptor 4
Database Link:	NP_005287 Entrez Gene 78134 MouseEntrez Gene 302378 RatEntrez Gene 491978 DogEntrez Gene 707170 MonkeyEntrez Gene 2846 Human Q99677
Synonyms:	GPR23; LPA4; P2RY9; P2Y5-LIKE; P2Y9
Note:	Specific for Human LPAR4 / GPR23. BLAST analysis of the peptide immunogen showed no homology with other human proteins.
Protein Families:	Druggable Genome, GPCR, Transmembrane



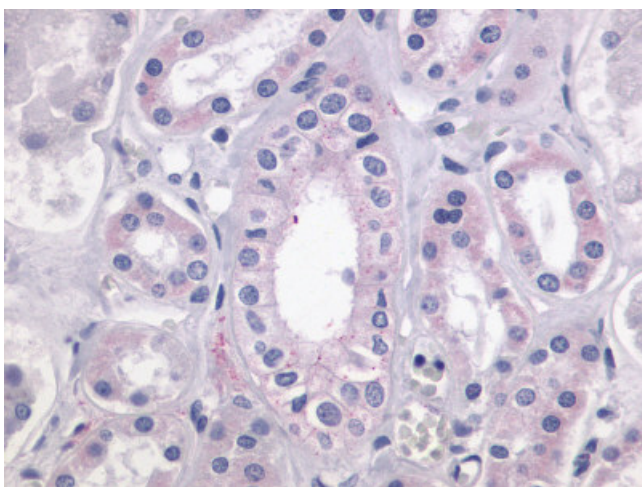
[View online »](#)

Protein Pathways: Neuroactive ligand-receptor interaction

Product images:



Anti-LPAR4 / GPR23 antibody IHC of human brain, cerebellum. Immunohistochemistry of formalin-fixed, paraffin-embedded tissue after heat-induced antigen retrieval.



Anti-LPAR4 / GPR23 antibody IHC of human kidney. Immunohistochemistry of formalin-fixed, paraffin-embedded tissue after heat-induced antigen retrieval.