

## Product datasheet for **TA316961**

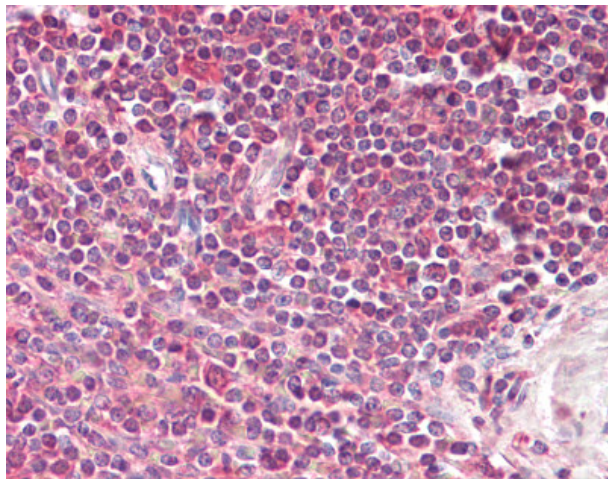
### LIMS2 Goat Polyclonal Antibody

#### Product data:

Product Type:	Primary Antibodies
Applications:	IHC
Recommended Dilution:	ELISA (1:8000), IHC-P (3.75 µg/ml)
Reactivity:	Human (Predicted: Monkey)
Host:	Goat
Clonality:	Polyclonal
Immunogen:	LIMS2 antibody was raised against synthetic peptide C-RWSNMSDALA from an internal region of human LIMS2 (NP_001129509.2; NP_001154875.1). Percent identity with other species by BLAST analysis: Human (100%), Marmoset (90%), Gorilla (80%), Monkey (80%), Rabbit (80%), Opossum (80%), Turkey (80%), Chicken (80%), Platypus (80%), Nectri (80%).
Formulation:	Tris-buffered saline, pH 7.3, 0.5% BSA, 0.02% sodium azide
Concentration:	lot specific
Purification:	Immunoaffinity Chromatography
Conjugation:	Unconjugated
Storage:	Store at -20°C as received.
Stability:	Stable for 12 months from date of receipt.
Gene Name:	LIM zinc finger domain containing 2
Database Link:	<a href="#">NP_060450</a> <a href="#">Entrez Gene 699463 Monkey</a> <a href="#">Entrez Gene 55679 Human</a> <a href="#">Q7Z4I7</a>
Synonyms:	LGMD2W; PINCH-2; PINCH2
Note:	Specific for Human LIMS2. This antibody is expected to recognize isoform 1 (NP_001129509.2) and isoformn 3 (NP_001154875.1).



[View online »](#)

**Product images:**

Anti-LIMS2 antibody IHC of human spleen. Immunohistochemistry of formalin-fixed, paraffin-embedded tissue after heat-induced antigen retrieval. Antibody concentration 3.75 ug/ml.