

Product datasheet for **TA316953**

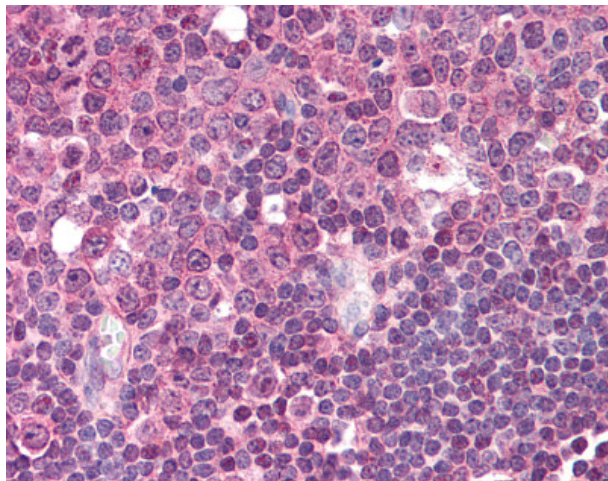
NTAL (LAT2) Mouse Monoclonal Antibody [Clone ID: NAP-03]

Product data:

Product Type:	Primary Antibodies
Clone Name:	NAP-03
Applications:	IHC
Recommended Dilution:	IHC-P (5 µg/ml), IP (1 - 2 µg/ml), WB (1 - 2 µg/ml)
Reactivity:	Human
Host:	Mouse
Isotype:	IgG2a
Clonality:	Monoclonal
Immunogen:	LAT2 / NTAL antibody was raised against synthetic peptide from human LAT2.
Formulation:	PBS, 15 mM sodium azide, approx., pH 7.4.
Concentration:	lot specific
Purification:	Protein A Column
Conjugation:	Unconjugated
Storage:	Store at -20°C as received.
Stability:	Stable for 12 months from date of receipt.
Gene Name:	linker for activation of T-cells family member 2
Database Link:	NP_054865 Entrez Gene 7462 Human Q9GZY6
Synonyms:	HSPC046; LAB; NTAL; WBSCR5; WBSCR15; WSCR5
Note:	Specific for Peptide corresponding to aa 196-212 of human NTAL coupled to KLH
Protein Families:	Transmembrane



[View online »](#)

Product images:

Anti-LAT2 antibody IHC of human tonsil. Immunohistochemistry of formalin-fixed, paraffin-embedded tissue after heat-induced antigen retrieval. Antibody concentration 5 ug/ml.