

Product datasheet for **TA316950**

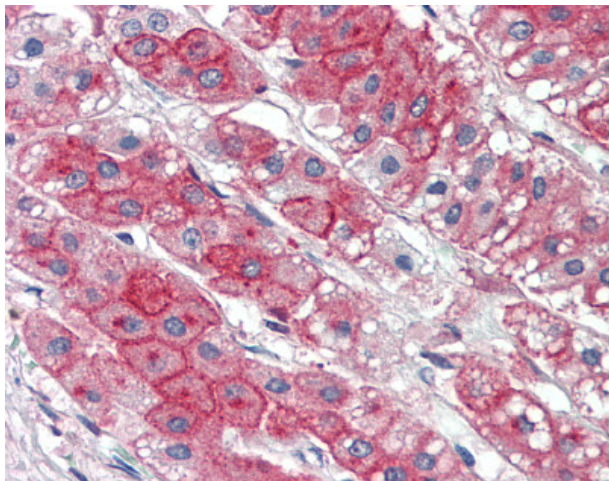
Estrogen induced gene 121 protein (KIAA1324) Rabbit Polyclonal Antibody

Product data:

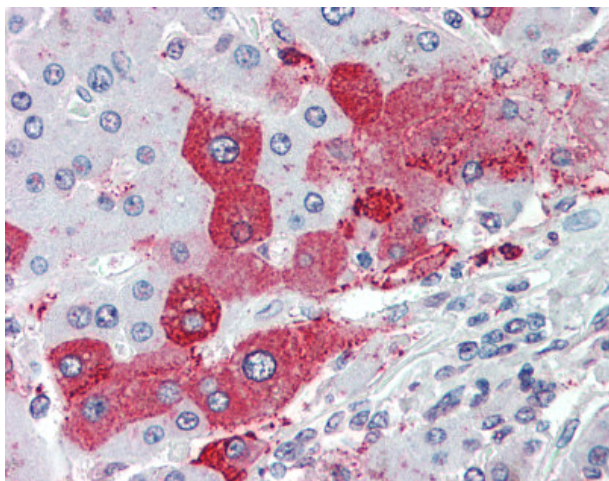
| | |
|-----------------------|--|
| Product Type: | Primary Antibodies |
| Applications: | IHC |
| Recommended Dilution: | IHC-P (15 µg/ml) |
| Reactivity: | Chimpanzee, Gorilla, Human, Gibbon, Orang-Utan (Predicted: Monkey) |
| Host: | Rabbit |
| Isotype: | IgG |
| Clonality: | Polyclonal |
| Immunogen: | KIAA1324 / maba1 antibody was raised against synthetic 17 amino acid peptide from internal region of human KIAA1324. Percent identity with other species by BLAST analysis: Human, Chimpanzee, Gorilla, Orangutan, Gibbon, Monkey (100%); Marmoset, Elephant (94%); Galago, Panda, Dog, Horse, Opossum, Platypus (88%); Mouse, Rat, Hamster, Bat, Bovine, Pig, Lizard (82%). |
| Formulation: | PBS, 0.1% sodium azide. |
| Concentration: | lot specific |
| Purification: | Immunoaffinity Chromatography |
| Conjugation: | Unconjugated |
| Storage: | Store at -20°C as received. |
| Stability: | Stable for 12 months from date of receipt. |
| Gene Name: | KIAA1324 |
| Database Link: | NP_065826 Entrez Gene 697670 Monkey Entrez Gene 57535 Human Q6UXG2 |
| Synonyms: | EIG121 |
| Note: | Specific for Human KIAA1324. BLAST analysis of the peptide immunogen showed no homology with other human proteins. |
| Protein Families: | Transmembrane |



[View online »](#)

Product images:

Anti-KIAA1324 antibody IHC of human adrenal. Immunohistochemistry of formalin-fixed, paraffin-embedded tissue after heat-induced antigen retrieval.



Anti-KIAA1324 antibody IHC of human liver. Immunohistochemistry of formalin-fixed, paraffin-embedded tissue after heat-induced antigen retrieval.