

## Product datasheet for **TA316947**

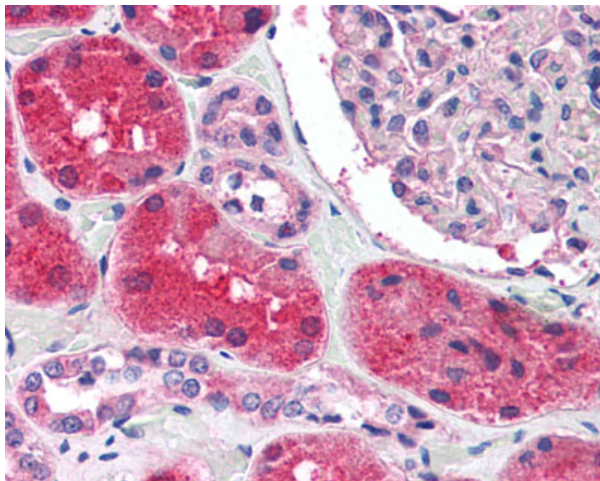
### KCNN2 Rabbit Polyclonal Antibody

#### Product data:

Product Type:	Primary Antibodies
Applications:	IHC
Recommended Dilution:	IHC-P (5 µg/ml)
Reactivity:	Gorilla, Human, Monkey, Gibbon, Orang-Utan (Predicted: Dog, Hamster, Horse, Guinea Pig)
Host:	Rabbit
Isotype:	IgG
Clonality:	Polyclonal
Immunogen:	KCNN2 antibody was raised against synthetic 18 amino acid peptide from C-terminus of human KCNN2. Percent identity with other species by BLAST analysis: Human, Gorilla, Orangutan, Gibbon, Monkey (100%); Hamster, Panda, Dog, Horse, Guinea pig (94%); Marmoset, Rat, Elephant, Bat (89%); Mouse, Pig (83%).
Formulation:	PBS, 0.1% sodium azide.
Concentration:	lot specific
Purification:	Immunoaffinity Chromatography
Conjugation:	Unconjugated
Storage:	Store at -20°C as received.
Stability:	Stable for 12 months from date of receipt.
Gene Name:	potassium calcium-activated channel subfamily N member 2
Database Link:	<a href="#">NP_740721</a> <a href="#">Entrez Gene 474640 Dog</a> <a href="#">Entrez Gene 695374 Monkey</a> <a href="#">Entrez Gene 3781 Human</a> <a href="#">Q9H2S1</a>
Synonyms:	hSK2; KCa2.2; SK2; SKCA2; SKCa 2
Note:	Specific for Human KCNN2. BLAST analysis of the peptide immunogen showed no homology with other human proteins.
Protein Families:	Druggable Genome, Ion Channels: Potassium, Transmembrane



[View online »](#)

**Product images:**

Anti-KCNN2 antibody IHC of human kidney. Immunohistochemistry of formalin-fixed, paraffin-embedded tissue after heat-induced antigen retrieval.