

Product datasheet for **TA316944**

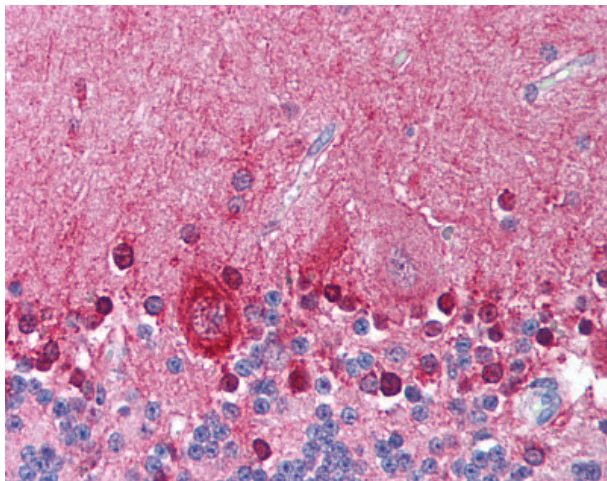
KCNMA1 Rabbit Polyclonal Antibody

Product data:

Product Type:	Primary Antibodies
Applications:	IHC
Recommended Dilution:	IHC-P (2.5 µg/ml)
Reactivity:	Bovine, Chicken, Dog, Xenopus, Human, Monkey, Mouse, Pig, Rabbit, Rat, Zebrafish, Hamster
Host:	Rabbit
Isotype:	IgG
Clonality:	Polyclonal
Immunogen:	KCNMA1 / BK antibody was raised against synthetic 15 amino acid peptide from internal region of human KCNMA1. Percent identity with other species by BLAST analysis: Human, Monkey, Mouse, Rat, Hamster, Bovine, Dog, Rabbit, Pig, Turkey, Chicken, Xenopus, Seabass, Stickleback, Pufferfish, Zebrafish (100%).
Formulation:	PBS, 0.1% sodium azide.
Concentration:	lot specific
Purification:	Immunoaffinity Chromatography
Conjugation:	Unconjugated
Storage:	Store at -20°C as received.
Stability:	Stable for 12 months from date of receipt.
Gene Name:	potassium calcium-activated channel subfamily M alpha 1
Database Link:	NP_002238 Entrez Gene 16531 Mouse Entrez Gene 83731 Rat Entrez Gene 403984 Dog Entrez Gene 574103 Monkey Entrez Gene 3778 Human Q12791
Synonyms:	bA205K10.1; BKTM; hSlo; KCa1.1; MaxiK; mSLO1; SAKCA; SLO; SLO-ALPHA; SLO1
Note:	Specific for Human KCNMA1. BLAST analysis of the peptide immunogen showed no homology with other human proteins.
Protein Families:	Druggable Genome, Ion Channels: Potassium, Transmembrane
Protein Pathways:	Vascular smooth muscle contraction



[View online »](#)

Product images:

Anti-KCNMA1 antibody IHC of human brain, cerebellum. Immunohistochemistry of formalin-fixed, paraffin-embedded tissue after heat-induced antigen retrieval.