

Product datasheet for **TA316942**

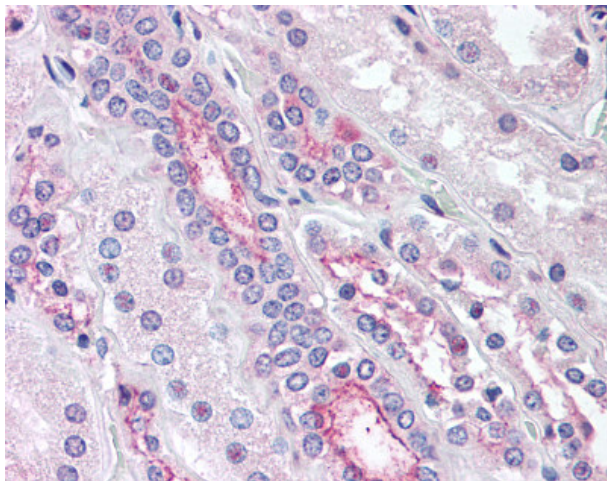
KCNE3 Rabbit Polyclonal Antibody

Product data:

Product Type:	Primary Antibodies
Applications:	IHC
Recommended Dilution:	IHC-P (10 - 20 µg/ml)
Reactivity:	Bat, Bovine, Chicken, Dog, Gorilla, Human, Mouse, Pig, Rabbit, Rat, Gibbon, Hamster, Horse (Predicted: Monkey, Xenopus)
Host:	Rabbit
Isotype:	IgG
Clonality:	Polyclonal
Immunogen:	KCNE3 antibody was raised against synthetic 14 amino acid peptide from internal region of human KCNE3. Percent identity with other species by BLAST analysis: Human, Gorilla, Gibbon, Monkey, Mouse, Rat, Hamster, Elephant, Panda, Bovine, Dog, Bat, Horse, Rabbit, Pig, Opossum, Chicken, Platypus (100%); Marmoset, Xenopus (93%).
Formulation:	PBS, 0.1% sodium azide.
Concentration:	lot specific
Purification:	Immunoaffinity Chromatography
Conjugation:	Unconjugated
Storage:	Store at -20°C as received.
Stability:	Stable for 12 months from date of receipt.
Gene Name:	potassium voltage-gated channel subfamily E regulatory subunit 3
Database Link:	NP_005463 Entrez Gene 57442 MouseEntrez Gene 63883 RatEntrez Gene 485197 DogEntrez Gene 718902 MonkeyEntrez Gene 10008 Human Q9Y6H6
Synonyms:	HOKPP; HYPP; MiRP2
Note:	Specific for Human KCNE3. BLAST analysis of the peptide immunogen showed no homology with other human proteins.
Protein Families:	Druggable Genome, Ion Channels: Other, Transmembrane



[View online »](#)

Product images:

Anti-KCNE3 antibody IHC of human kidney. Immunohistochemistry of formalin-fixed, paraffin-embedded tissue after heat-induced antigen retrieval.