

Product datasheet for **TA316924**

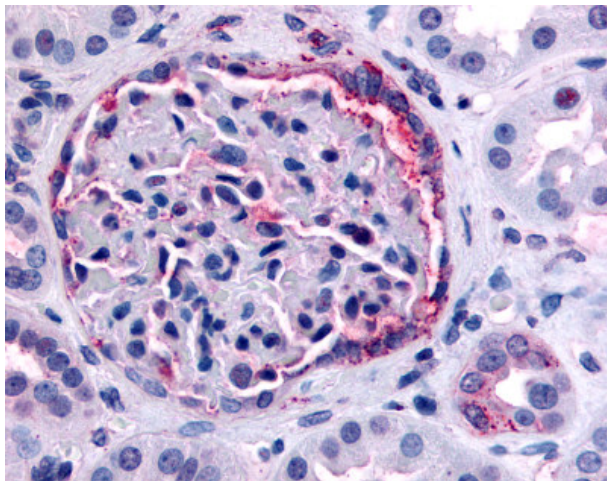
PIB5PA (INPP5J) Rabbit Polyclonal Antibody

Product data:

Product Type:	Primary Antibodies
Applications:	IHC
Recommended Dilution:	IHC-P (6 µg/ml)
Reactivity:	Bat, Bovine, Dog, Gorilla, Human, Monkey, Mouse, Pig, Rabbit, Rat, Gibbon, Hamster, Horse
Host:	Rabbit
Isotype:	IgG
Clonality:	Polyclonal
Immunogen:	INPP5J / PIB5PA antibody was raised against synthetic 18 amino acid peptide from near C-terminus of human INPP5J / PIB5PA. Percent identity with other species by BLAST analysis: Human, Gorilla, Gibbon, Monkey, Marmoset, Mouse, Rat, Hamster, Elephant, Panda, Bovine, Dog, Bat, Horse, Rabbit, Pig (100%); Platypus (83%).
Formulation:	PBS, 0.1% sodium azide.
Concentration:	lot specific
Purification:	Immunoaffinity Chromatography
Conjugation:	Unconjugated
Storage:	Store at -20°C as received.
Stability:	Stable for 12 months from date of receipt.
Gene Name:	inositol polyphosphate-5-phosphatase J
Database Link:	NP_055237 Entrez Gene 170835 MouseEntrez Gene 171088 RatEntrez Gene 486360 DogEntrez Gene 718308 MonkeyEntrez Gene 27124 Human Q15735
Synonyms:	INPP5; MGC129984; PIPP
Note:	Specific for Human INPP5J / PIB5PA. BLAST analysis of the peptide immunogen showed no homology with other human proteins, except PPP1R3A (50%).
Protein Families:	Druggable Genome
Protein Pathways:	Inositol phosphate metabolism, Metabolic pathways, Phosphatidylinositol signaling system



[View online »](#)

Product images:

Anti-INPP5J / PIB5PA antibody IHC of human kidney. Immunohistochemistry of formalin-fixed, paraffin-embedded tissue after heat-induced antigen retrieval.