

Product datasheet for **TA316918**

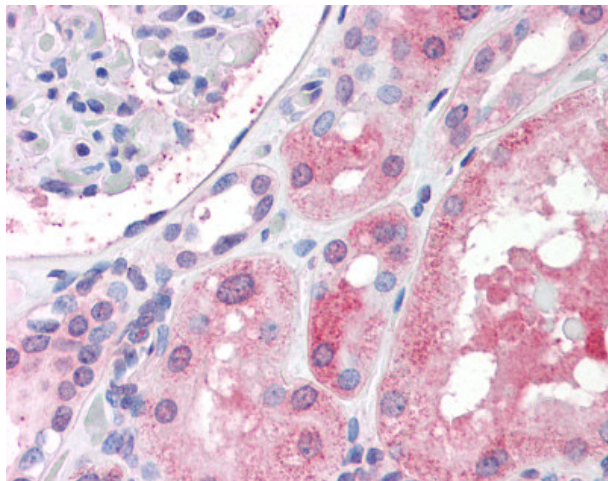
IGSF8 Rabbit Polyclonal Antibody

Product data:

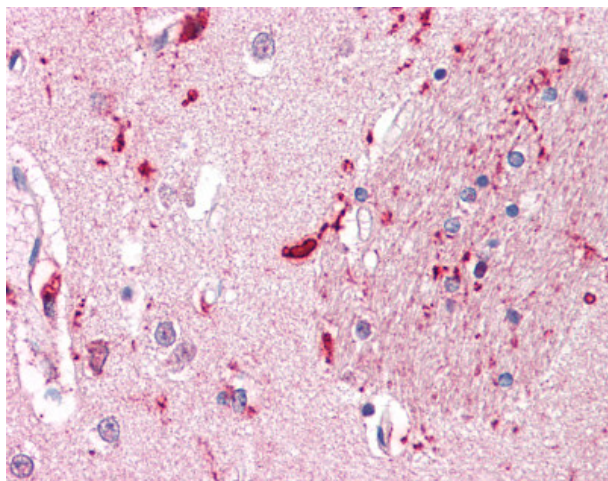
Product Type:	Primary Antibodies
Applications:	IHC
Recommended Dilution:	IHC-P (15 - 20 µg/ml)
Reactivity:	Chimpanzee, Gorilla, Human, Monkey, Rabbit, Gibbon, Orang-Utan (Predicted: Bat, Bovine, Pig, Guinea Pig)
Host:	Rabbit
Isotype:	IgG
Clonality:	Polyclonal
Immunogen:	CD316 / IGSF8 antibody was raised against synthetic 15 amino acid peptide from internal region of human IGSF8. Percent identity with other species by BLAST analysis: Human, Chimpanzee, Gorilla, Orangutan, Gibbon, Monkey, Galago, Rabbit (100%); Panda, Bovine, Bat, Pig, Guinea pig (93%); Mouse, Opossum (87%); Elephant (80%).
Formulation:	PBS, 0.1% sodium azide.
Concentration:	lot specific
Purification:	Immunoaffinity Chromatography
Conjugation:	Unconjugated
Storage:	Store at -20°C as received.
Stability:	Stable for 12 months from date of receipt.
Gene Name:	immunoglobulin superfamily member 8
Database Link:	NP_443100 Entrez Gene 720186 Monkey Entrez Gene 93185 Human Q969P0
Synonyms:	CD81P3; CD316; EWI-2; EWI2; KCT-4; LIR-D1; PGRL
Note:	Specific for Human IGSF8. BLAST analysis of the peptide immunogen showed no homology with other human proteins, except BOC (67%), CD101 (67%), FLT1 (53%).
Protein Families:	Transmembrane



[View online »](#)

Product images:

Anti-IGSF8 antibody IHC of human kidney. Immunohistochemistry of formalin-fixed, paraffin-embedded tissue after heat-induced antigen retrieval.



Anti-IGSF8 antibody IHC of human brain, putamen. Immunohistochemistry of formalin-fixed, paraffin-embedded tissue after heat-induced antigen retrieval.