

## Product datasheet for **TA316917**

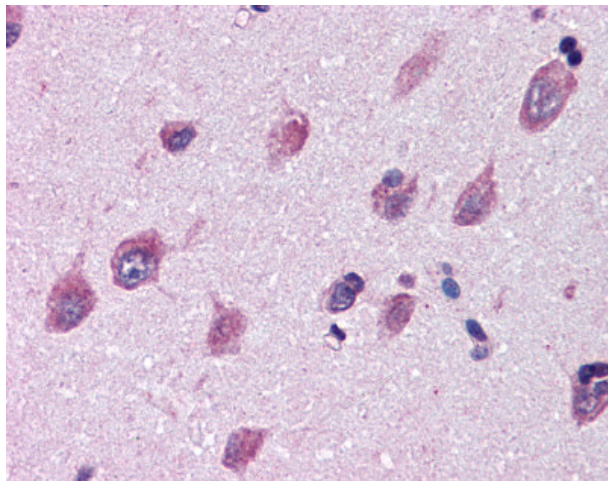
### IGSF8 Rabbit Polyclonal Antibody

#### Product data:

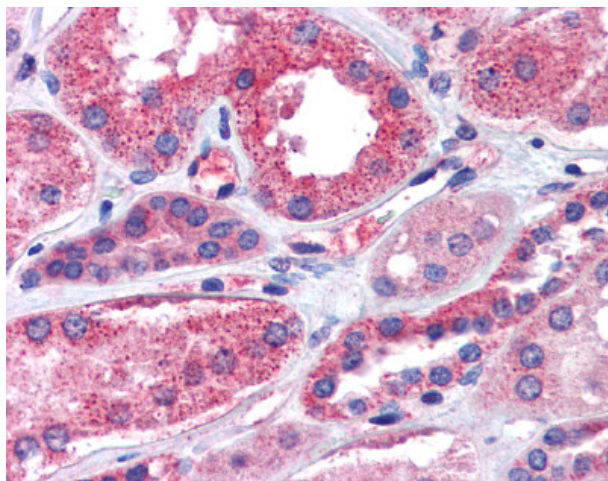
Product Type:	Primary Antibodies
Applications:	IHC
Recommended Dilution:	IHC-P (15 µg/ml)
Reactivity:	Bat, Bovine, Gorilla, Human, Monkey, Pig, Rabbit, Gibbon (Predicted: Mouse, Rat)
Host:	Rabbit
Isotype:	IgG
Clonality:	Polyclonal
Immunogen:	CD316 / IGSF8 antibody was raised against synthetic 15 amino acid peptide from internal region of human IGSF8. Percent identity with other species by BLAST analysis: Human, Gorilla, Gibbon, Monkey, Marmoset, Bovine, Bat, Elephant, Panda, Rabbit, Pig (100%); Mouse, Rat (93%).
Formulation:	PBS, 0.1% sodium azide.
Concentration:	lot specific
Purification:	Immunoaffinity Chromatography
Conjugation:	Unconjugated
Storage:	Store at -20°C as received.
Stability:	Stable for 12 months from date of receipt.
Gene Name:	immunoglobulin superfamily member 8
Database Link:	<a href="#">NP_443100</a> <a href="#">Entrez Gene 140559 MouseEntrez Gene 304979 RatEntrez Gene 720186 MonkeyEntrez Gene 93185 Human</a> <a href="#">Q969P0</a>
Synonyms:	CD81P3; CD316; EWI-2; EWI2; KCT-4; LIR-D1; PGRL
Note:	Specific for Human IGSF8. BLAST analysis of the peptide immunogen showed no homology with other human proteins, except SIAH2 (53%).
Protein Families:	Transmembrane



[View online »](#)

**Product images:**

Anti-IGSF8 antibody IHC of human brain, cortex. Immunohistochemistry of formalin-fixed, paraffin-embedded tissue after heat-induced antigen retrieval.



Anti-IGSF8 antibody IHC of human kidney. Immunohistochemistry of formalin-fixed, paraffin-embedded tissue after heat-induced antigen retrieval.