

Product datasheet for **TA316916**

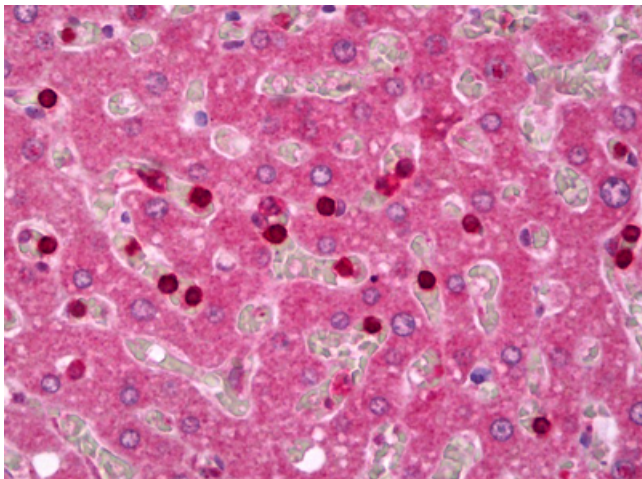
IGFBP5 Rabbit Polyclonal Antibody

Product data:

Product Type:	Primary Antibodies
Applications:	IHC
Recommended Dilution:	IHC-P (5 µg/ml), WB (1:200)
Reactivity:	Bat, Bovine, Dog, Gorilla, Goat, Human, Monkey, Pig, Rabbit, Gibbon, Hamster, Horse (Predicted: Mouse, Rat, Chicken)
Host:	Rabbit
Isotype:	IgG
Clonality:	Polyclonal
Immunogen:	IGFBP5 antibody was raised against human IGFBP5 amino acids 192-206 (CRRHMEASLQELKAS). Percent identity by BLAST analysis: Human, Gorilla, Gibbon, Monkey, Dog, Bat, Bovine, Goat, Hamster, Elephant, Panda, Horse, Rabbit, Pig (100%); Mouse, Rat, Opossum, Chicken (93%); Marmoset (87%).
Formulation:	TBS pH 7.4, containing 50% glycerol, 0.5 mg/ml BSA, and 0.02% sodium azide
Concentration:	lot specific
Purification:	Affinity Purified
Conjugation:	Unconjugated
Storage:	Store at -20°C as received.
Stability:	Stable for 12 months from date of receipt.
Gene Name:	insulin like growth factor binding protein 5
Database Link:	NP_000590 Entrez Gene 16011 Mouse Entrez Gene 25285 Rat Entrez Gene 610316 Dog Entrez Gene 696339 Monkey Entrez Gene 3488 Human P24593
Synonyms:	IBP5
Note:	The recognized sequence partially overlaps the IGFBP5 region identified as a nuclear localized signal.
Protein Families:	Druggable Genome, Secreted Protein



[View online »](#)

Product images:

Anti-IGFBP5 antibody IHC of human liver. Immunohistochemistry of formalin-fixed, paraffin-embedded tissue after heat-induced antigen retrieval. Antibody concentration 5 ug/ml.