

## Product datasheet for **TA316913**

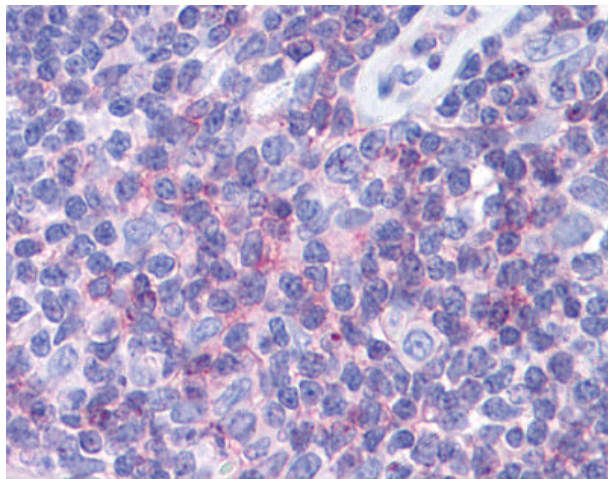
### IFITM1 Rabbit Polyclonal Antibody

#### Product data:

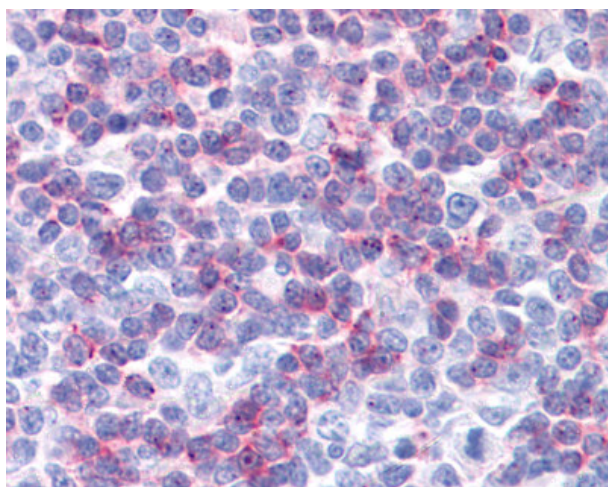
Product Type:	Primary Antibodies
Applications:	IHC
Recommended Dilution:	ELISA, IHC-P (10 µg/ml), WB (2.5 - 5 µg/ml)
Reactivity:	Human
Host:	Rabbit
Isotype:	IgG
Clonality:	Polyclonal
Immunogen:	CD225 / IFITM1 antibody was raised against a 14 amino acid peptide near the carboxy terminus of human IFITM1.
Formulation:	PBS, 0.02% sodium azide
Concentration:	lot specific
Purification:	Immunoaffinity Chromatography
Conjugation:	Unconjugated
Storage:	Store at -20°C as received.
Stability:	Stable for 12 months from date of receipt.
Gene Name:	interferon induced transmembrane protein 1
Database Link:	<a href="#">NP_003632</a> <a href="#">Entrez Gene 8519 Human P13164</a>
Synonyms:	9-27; CD225; DSPA2a; IFI17; LEU13
Note:	Specific for Human IFITM1
Protein Families:	Druggable Genome, Transmembrane
Protein Pathways:	B cell receptor signaling pathway



[View online »](#)

**Product images:**

Anti-IFITM1 antibody IHC of human thymus. Immunohistochemistry of formalin-fixed, paraffin-embedded tissue after heat-induced antigen retrieval. Antibody concentration 10 ug/ml.



Anti-IFITM1 antibody IHC of human tonsil. Immunohistochemistry of formalin-fixed, paraffin-embedded tissue after heat-induced antigen retrieval. Antibody concentration 10 ug/ml.