

Product datasheet for **TA316906**

5HT6 Receptor (HTR6) Rabbit Polyclonal Antibody

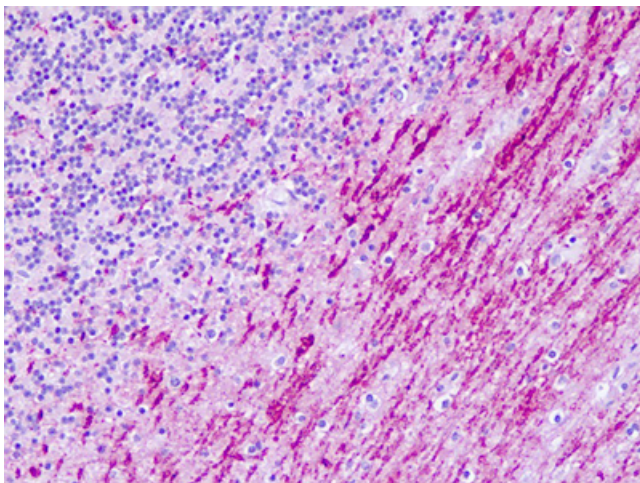
Product data:

Product Type:	Primary Antibodies
Applications:	IHC
Recommended Dilution:	IHC-P (10 - 20 µg/ml)
Reactivity:	Chimpanzee, Dog, Gorilla, Human, Monkey, Rat, Gibbon, Hamster, Horse (Predicted: Mouse, Bat, Bovine, Rabbit)
Host:	Rabbit
Isotype:	IgG
Clonality:	Polyclonal
Immunogen:	HTR6 / 5-HT6 Receptor antibody was raised against synthetic 17 amino acid peptide from C-terminus of human HTR6 / 5-HT36. Percent identity with other species by BLAST analysis: Human, Chimpanzee, Gorilla, Gibbon, Monkey, Marmoset, Rat, Hamster, Panda, Dog, Horse (100%); Mouse, Elephant, Bovine, Bat, Rabbit (94%); Stickleback, Pufferfish (88%); Turkey, Chicken, Xenopus, Zebrafish (82%).
Formulation:	PBS, 0.1% sodium azide.
Concentration:	lot specific
Purification:	Immunoaffinity Chromatography
Conjugation:	Unconjugated
Storage:	Store at -20°C as received.
Stability:	Stable for 12 months from date of receipt.
Gene Name:	5-hydroxytryptamine receptor 6
Database Link:	NP_000862 Entrez Gene 15565 Mouse Entrez Gene 64354 Rat Entrez Gene 487402 Dog Entrez Gene 716776 Monkey Entrez Gene 3362 Human P50406
Synonyms:	5-HT6; 5-HT6R
Note:	Specific for Human HTR6 / 5-HT36. BLAST analysis of the peptide immunogen showed no homology with other human proteins.
Protein Families:	Druggable Genome, GPCR, Transmembrane



[View online »](#)

Protein Pathways: Calcium signaling pathway, Neuroactive ligand-receptor interaction

Product images:

Human, Brain, Cerebellum: Formalin-Fixed Paraffin-Embedded (FFPE)