

Product datasheet for **TA316883**

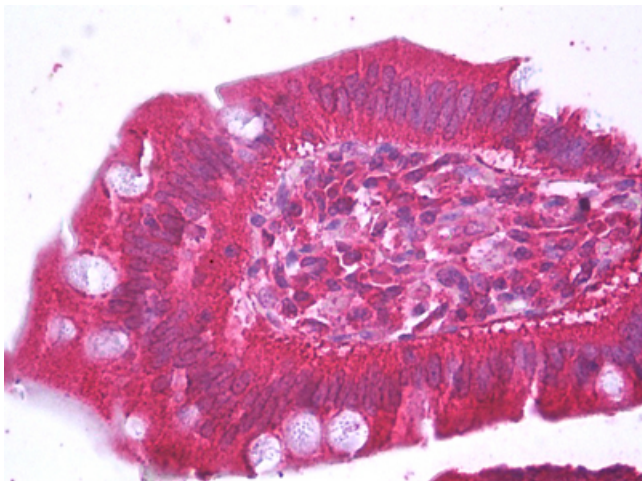
Repulsive Guidance Molecule C (HFE2) Mouse Monoclonal Antibody [Clone ID: 1C12]

Product data:

| | |
|-----------------------|---|
| Product Type: | Primary Antibodies |
| Clone Name: | 1C12 |
| Applications: | IHC |
| Recommended Dilution: | ELISA, IHC-P (5 µg/ml), WB |
| Reactivity: | Human |
| Host: | Mouse |
| Isotype: | IgG2a, kappa |
| Clonality: | Monoclonal |
| Immunogen: | HFE2 / Hemojuvelin antibody was raised against hFE2 (NP_973733, 93 a.a. ~ 174 a.a) partial recombinant protein with GST tag. MW of the GST tag alone is 26 KDa. |
| Formulation: | PBS, pH 7.2. Sourced in Ascites. |
| Concentration: | lot specific |
| Purification: | Protein A Column |
| Conjugation: | Unconjugated |
| Storage: | Store at -20°C as received. |
| Stability: | Stable for 12 months from date of receipt. |
| Gene Name: | hemochromatosis type 2 (juvenile) |
| Database Link: | NP_660320 Entrez Gene 148738 Human Q6ZVN8 |
| Synonyms: | HFE2A; HJV; JH; RGMC |
| Note: | Specific for Human HFE2 |
| Protein Families: | Transmembrane |



[View online »](#)

Product images:

Anti-HFE2 antibody IHC of human small intestine. Immunohistochemistry of formalin-fixed, paraffin-embedded tissue after heat-induced antigen retrieval. Antibody concentration 5 ug/ml.