

Product datasheet for **TA316878**

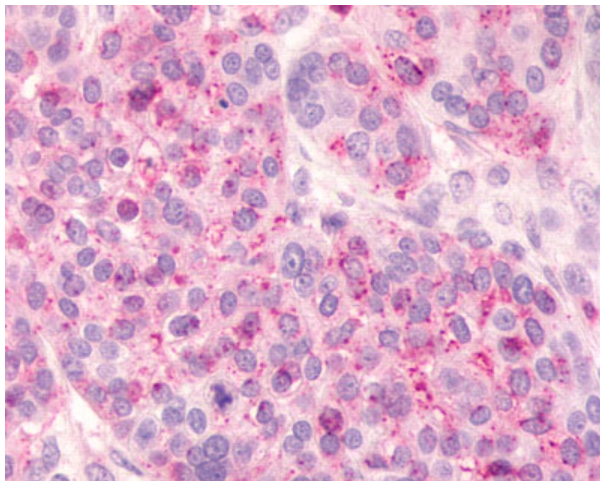
HCAR1 Rabbit Polyclonal Antibody

Product data:

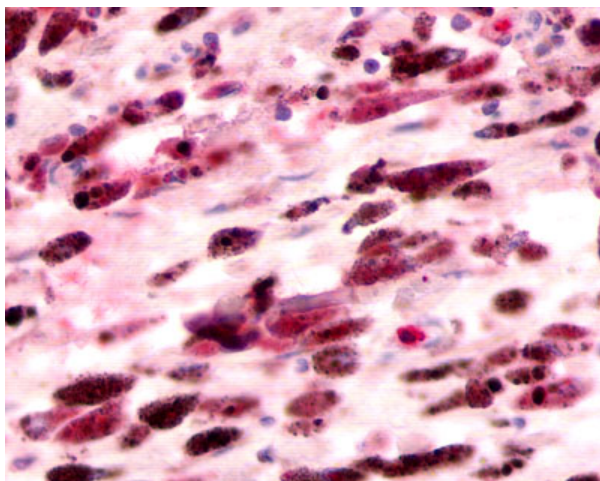
Product Type:	Primary Antibodies
Applications:	IHC
Recommended Dilution:	IHC-P (3 µg/ml)
Reactivity:	Bat, Dog, Gorilla, Human, Monkey, Rabbit, Rat, Hamster (Predicted: Mouse, Horse, Pig)
Host:	Rabbit
Isotype:	IgG
Clonality:	Polyclonal
Immunogen:	FKSG80 / GPR81 antibody was raised against synthetic 16 amino acid peptide from 2nd extracellular domain of human GPR81. Percent identity with other species by BLAST analysis: Human, Gorilla, Monkey, Marmoset, Rat, Dog, Bat, Hamster, Panda, Rabbit, Opossum (100%); Mouse, Horse, Pig, Platypus (94%); Bovine (88%); Elephant (81%).
Formulation:	PBS, 0.1% sodium azide.
Concentration:	lot specific
Purification:	Immunoaffinity Chromatography
Conjugation:	Unconjugated
Storage:	Store at -20°C as received.
Stability:	Stable for 12 months from date of receipt.
Gene Name:	hydroxycarboxylic acid receptor 1
Database Link:	NP_115943 Entrez Gene 243270 MouseEntrez Gene 486252 DogEntrez Gene 369158 RatEntrez Gene 702825 MonkeyEntrez Gene 27198 Human Q9BXC0
Synonyms:	FKSG80; GPR81; GPR104; HCA1; LACR1; TA-GPCR; TAGPCR
Note:	Specific for Human GPR81. BLAST analysis of the peptide immunogen showed no homology with other human proteins.
Protein Families:	Druggable Genome, GPCR, Transmembrane



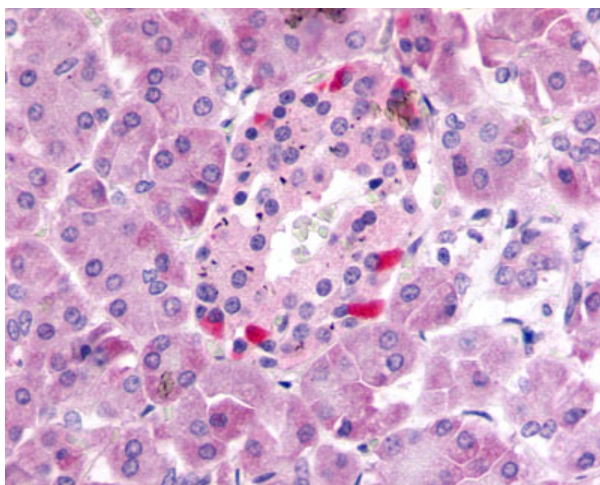
[View online »](#)

Product images:

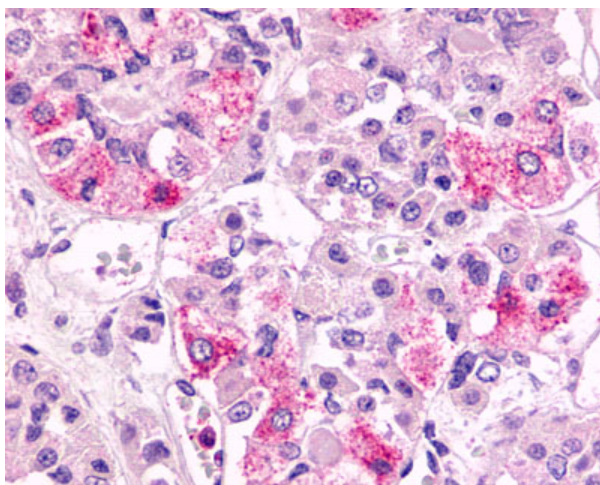
Anti-FKSG80 / GPR81 antibody IHC of human Ovary, Carcinoma. Immunohistochemistry of formalin-fixed, paraffin-embedded tissue after heat-induced antigen retrieval.



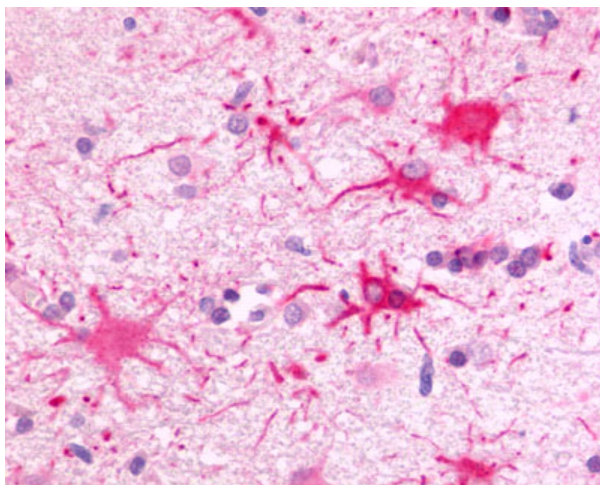
Anti-FKSG80 / GPR81 antibody IHC of human Skin, Melanoma. Immunohistochemistry of formalin-fixed, paraffin-embedded tissue after heat-induced antigen retrieval.



Anti-FKSG80 / GPR81 antibody IHC of human pancreas islet of Langerhans. Immunohistochemistry of formalin-fixed, paraffin-embedded tissue after heat-induced antigen retrieval.



Anti-GPR81 antibody IHC of human pituitary, anterior. Immunohistochemistry of formalin-fixed, paraffin-embedded tissue after heat-induced antigen retrieval.



Anti-FKSG80 / GPR81 antibody IHC of human Brain, Glioblastoma. Immunohistochemistry of formalin-fixed, paraffin-embedded tissue after heat-induced antigen retrieval.