

Product datasheet for **TA316873**

GRPR Rabbit Polyclonal Antibody

Product data:

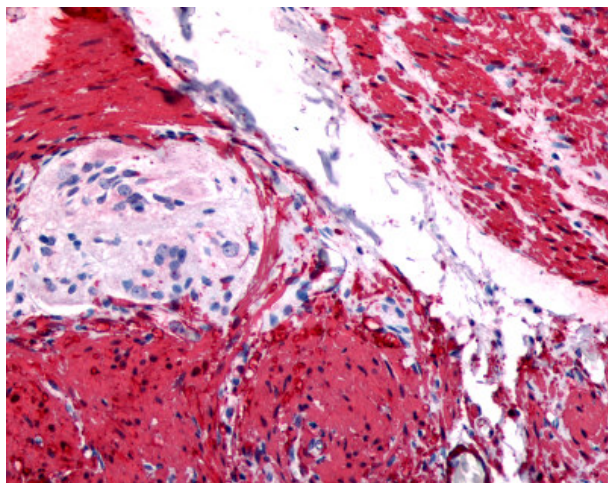
Product Type:	Primary Antibodies
Applications:	IHC
Recommended Dilution:	ICC, IHC-P (5 µg/ml)
Reactivity:	Bat, Bovine, Dog, Gorilla, Human, Monkey, Mouse, Pig, Rat, Gibbon, Hamster (Predicted: Rabbit)
Host:	Rabbit
Isotype:	IgG
Clonality:	Polyclonal
Immunogen:	GRPR antibody was raised against synthetic 17 amino acid peptide from 3rd cytoplasmic domain of human GRPR. Percent identity with other species by BLAST analysis: Human, Gorilla, Gibbon, Monkey, Marmoset, Mouse, Rat, Hamster, Elephant, Bovine, Dog, Bat, Pig (100%); Panda, Rabbit, Opossum (94%); Horse (88%); Turkey, Chicken, Lizard (82%).
Formulation:	PBS, 0.1% sodium azide.
Concentration:	lot specific
Purification:	Immunoaffinity Chromatography
Conjugation:	Unconjugated
Storage:	Store at -20°C as received.
Stability:	Stable for 12 months from date of receipt.
Gene Name:	gastrin releasing peptide receptor
Database Link:	NP_005305 Entrez Gene 14829 Mouse Entrez Gene 24938 Rat Entrez Gene 491754 Dog Entrez Gene 574339 Monkey Entrez Gene 2925 Human P30550
Synonyms:	BB2; BB2R
Note:	Specific for Human GRPR. BLAST analysis of the peptide immunogen showed no homology with other human proteins, except ADAM28 (41%).
Protein Families:	Druggable Genome, GPCR, Transmembrane



[View online »](#)

Protein Pathways: Calcium signaling pathway, Neuroactive ligand-receptor interaction

Product images:



Anti-GRPR antibody IHC of human colon. Immunohistochemistry of formalin-fixed, paraffin-embedded tissue after heat-induced antigen retrieval.