

Product datasheet for **TA316859**

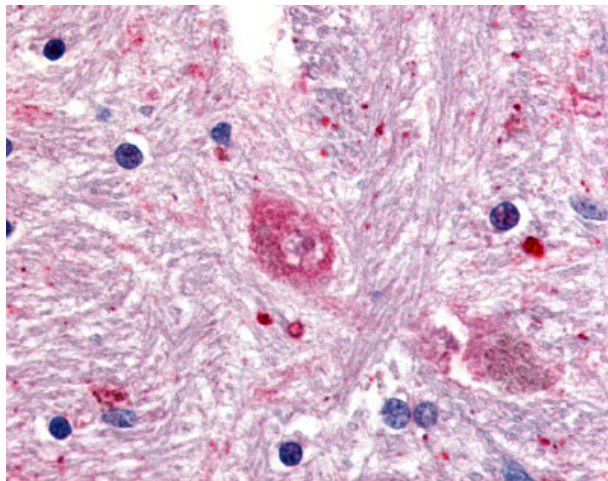
GPR88 Rabbit Polyclonal Antibody

Product data:

Product Type:	Primary Antibodies
Applications:	IHC
Recommended Dilution:	ELISA, IHC-P (5 µg/ml)
Reactivity:	Bovine, Gorilla, Human, Monkey, Mouse, Rabbit, Rat, Hamster
Host:	Rabbit
Isotype:	IgG
Clonality:	Polyclonal
Immunogen:	GPR88 antibody was raised against synthetic 18 amino acid peptide from 1st cytoplasmic domain of human GPR88. Percent identity with other species by BLAST analysis: Human, Gorilla, Monkey, Mouse, Rat, Bovine, Hamster, Panda, Rabbit, Opossum (100%); Turkey, Chicken (89%); Lizard, Xenopus (83%).
Formulation:	PBS, 0.1% sodium azide.
Concentration:	lot specific
Purification:	Immunoaffinity Chromatography
Conjugation:	Unconjugated
Storage:	Store at -20°C as received.
Stability:	Stable for 12 months from date of receipt.
Gene Name:	G protein-coupled receptor 88
Database Link:	NP_071332 Entrez Gene 64378 MouseEntrez Gene 64443 RatEntrez Gene 716520 MonkeyEntrez Gene 54112 Human Q9GZN0
Synonyms:	COCPMR; STRG
Note:	Specific for Human GPR88. BLAST analysis of the peptide immunogen showed no homology with other human proteins.
Protein Families:	Druggable Genome, GPCR, Transmembrane



[View online »](#)

Product images:

Anti-GPR88 antibody IHC of human brain, caudate. Immunohistochemistry of formalin-fixed, paraffin-embedded tissue after heat-induced antigen retrieval.