

Product datasheet for **TA316854**

GPR84 Rabbit Polyclonal Antibody

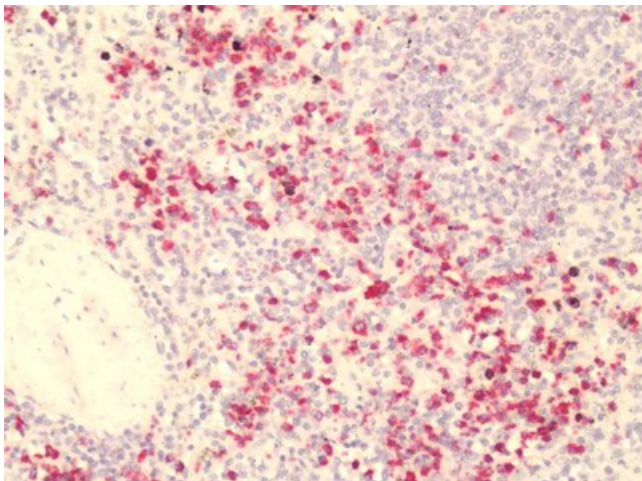
Product data:

Product Type:	Primary Antibodies
Applications:	IHC
Recommended Dilution:	IHC-P
Reactivity:	Gorilla, Human, Monkey, Horse
Host:	Rabbit
Isotype:	IgG
Clonality:	Polyclonal
Immunogen:	GPR84 antibody was raised against synthetic 19 amino acid peptide from 2nd extracellular domain of human GPR84. Percent identity with other species by BLAST analysis: Human, Gorilla, Monkey, Marmoset, Horse (100%); Gibbon (95%); Elephant, Bovine, Rabbit (89%); Mouse, Dog (84%).
Formulation:	PBS, 0.1% sodium azide.
Concentration:	lot specific
Purification:	Immunoaffinity Chromatography
Conjugation:	Unconjugated
Storage:	Store at -20°C as received.
Stability:	Stable for 12 months from date of receipt.
Gene Name:	G protein-coupled receptor 84
Database Link:	NP_065103 Entrez Gene 705309 Monkey Entrez Gene 53831 Human Q9NQ55
Synonyms:	EX33; GPCR4
Note:	Specific for Human GPR84. BLAST analysis of the peptide immunogen showed no homology with other human proteins.
Protein Families:	Druggable Genome, GPCR, Transmembrane



[View online »](#)

Product images:



Human, Spleen: Formalin-Fixed Paraffin-Embedded (FFPE)