

## Product datasheet for **TA316852**

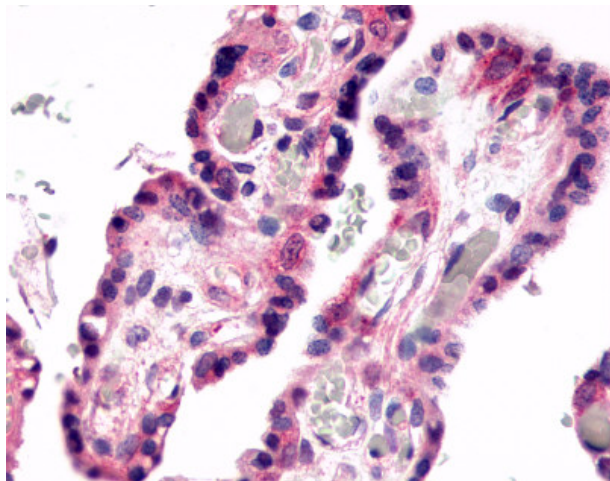
### GPR78 Rabbit Polyclonal Antibody

#### Product data:

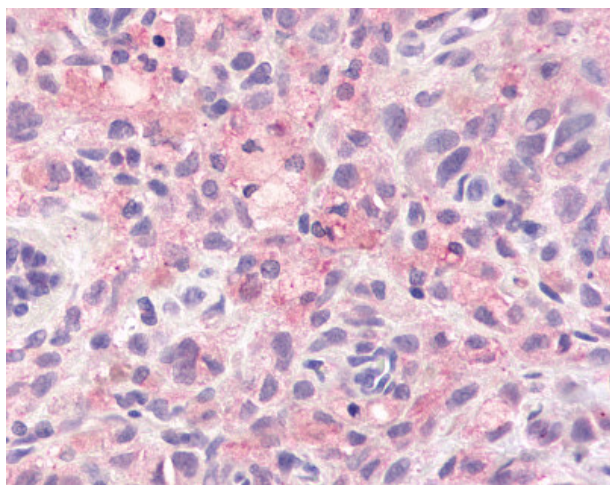
Product Type:	Primary Antibodies
Applications:	IHC
Recommended Dilution:	IHC-P (3 - 6 µg/ml)
Reactivity:	Gorilla, Human
Host:	Rabbit
Isotype:	IgG
Clonality:	Polyclonal
Immunogen:	GPR78 antibody was raised against synthetic 19 amino acid peptide from C-terminus of human GPR78. Percent identity with other species by BLAST analysis: Human, Gorilla (100%).
Formulation:	PBS, 0.1% sodium azide.
Concentration:	lot specific
Purification:	Immunoaffinity Chromatography
Conjugation:	Unconjugated
Storage:	Store at -20°C as received.
Stability:	Stable for 12 months from date of receipt.
Gene Name:	G protein-coupled receptor 78
Database Link:	<a href="#">NP_543009</a> <a href="#">Entrez Gene 27201 Human</a> <a href="#">Q96P69</a>
Synonyms:	GPR78
Note:	Specific for Human GPR78. BLAST analysis of the peptide immunogen showed no homology with other human proteins.
Protein Families:	Druggable Genome, GPCR, Transmembrane



[View online »](#)

**Product images:**

Anti-GPR78 antibody IHC of human placenta, villi. Immunohistochemistry of formalin-fixed, paraffin-embedded tissue after heat-induced antigen retrieval.



Anti-GPR78 antibody IHC of human Skin, Melanoma. Immunohistochemistry of formalin-fixed, paraffin-embedded tissue after heat-induced antigen retrieval.