

## Product datasheet for **TA316851**

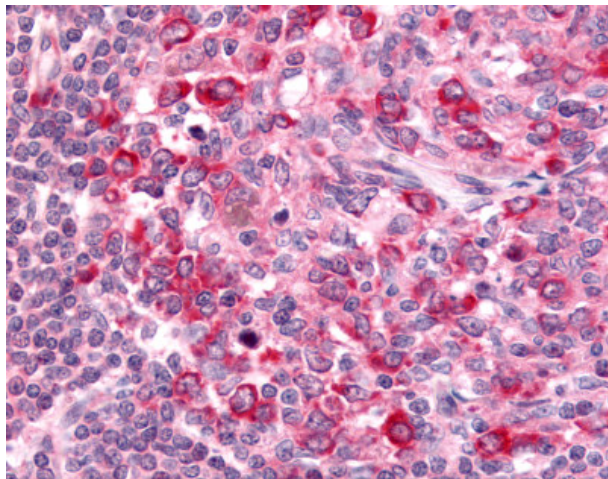
### GPR65 Rabbit Polyclonal Antibody

#### Product data:

Product Type:	Primary Antibodies
Applications:	IHC
Recommended Dilution:	IHC-P (10 µg/ml)
Reactivity:	Human
Host:	Rabbit
Isotype:	IgG
Clonality:	Polyclonal
Immunogen:	GPR65 / TDAG8 antibody was raised against synthetic 18 amino acid peptide from 3rd extracellular domain of human GPR65. Percent identity with other species by BLAST analysis: Human (100%); Gorilla, Gibbon (94%).
Formulation:	PBS, 0.1% sodium azide.
Concentration:	lot specific
Purification:	Immunoaffinity Chromatography
Conjugation:	Unconjugated
Storage:	Store at -20°C as received.
Stability:	Stable for 12 months from date of receipt.
Gene Name:	G protein-coupled receptor 65
Database Link:	<a href="#">NP_003599</a> <a href="#">Entrez Gene 8477 Human</a> <a href="#">Q8IYL9</a>
Synonyms:	hTDAG8; TDAG8
Note:	Specific for Human GPR65. BLAST analysis of the peptide immunogen showed no homology with other human proteins, except VCL (50%), CPS1 (39%).
Protein Families:	Druggable Genome, GPCR, Transmembrane



[View online »](#)

**Product images:**

Anti-GPR65 antibody IHC of human lymph node. Immunohistochemistry of formalin-fixed, paraffin-embedded tissue after heat-induced antigen retrieval.