

Product datasheet for **TA316850**

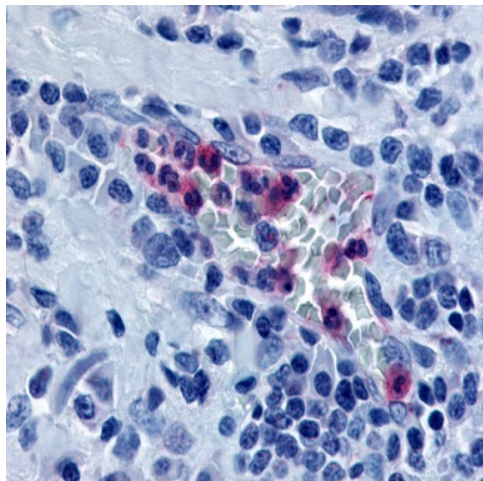
GPR65 Rabbit Polyclonal Antibody

Product data:

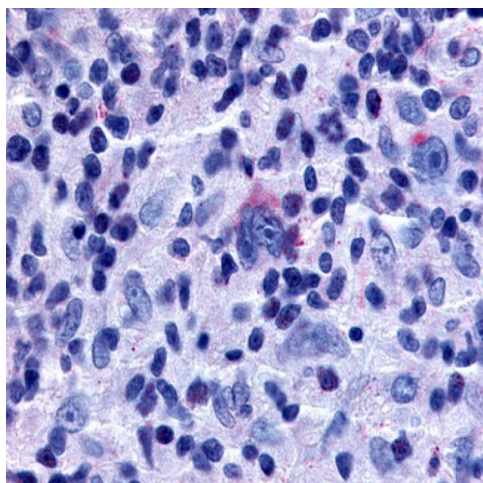
Product Type:	Primary Antibodies
Applications:	IHC
Recommended Dilution:	IHC-P (9 - 23 µg/ml)
Reactivity:	Gorilla, Human (Predicted: Monkey)
Host:	Rabbit
Isotype:	IgG
Clonality:	Polyclonal
Immunogen:	GPR65 / TDAG8 antibody was raised against synthetic 19 amino acid peptide from 3rd cytoplasmic domain of human GPR65. Percent identity with other species by BLAST analysis: Human, Gorilla, Monkey (100%); Gibbon, Marmoset (95%); Rabbit (84%).
Formulation:	PBS, 0.1% sodium azide.
Concentration:	lot specific
Purification:	Immunoaffinity Chromatography
Conjugation:	Unconjugated
Storage:	Store at -20°C as received.
Stability:	Stable for 12 months from date of receipt.
Gene Name:	G protein-coupled receptor 65
Database Link:	NP_003599 Entrez Gene 693449 Monkey Entrez Gene 8477 Human Q8IYL9
Synonyms:	hTDAG8; TDAG8
Note:	Specific for Human GPR65. BLAST analysis of the peptide immunogen showed no homology with other human proteins.
Protein Families:	Druggable Genome, GPCR, Transmembrane



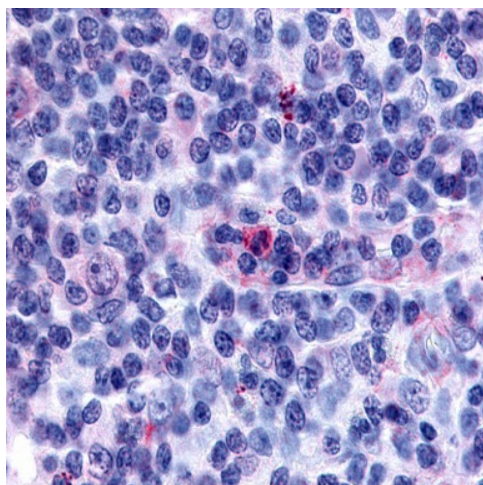
[View online »](#)

Product images:

Anti-GPR65 / TDAG8 antibody IHC of human tonsil. Immunohistochemistry of formalin-fixed, paraffin-embedded tissue after heat-induced antigen retrieval.



Anti-GPR65 / TDAG8 antibody IHC of human Lymph Node, Hodgkins Lymphoma. Immunohistochemistry of formalin-fixed, paraffin-embedded tissue after heat-induced antigen retrieval.



Anti-GPR65 antibody IHC of human lymph node, Hodgkin's disease. Immunohistochemistry of formalin-fixed, paraffin-embedded tissue after heat-induced antigen retrieval.