

Product datasheet for **TA316845**

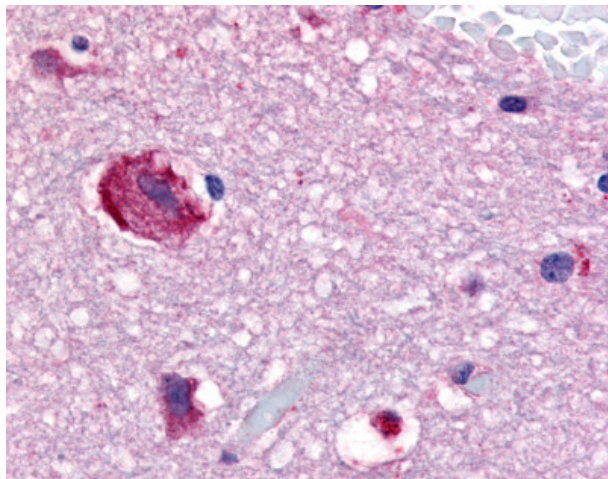
GPR61 Rabbit Polyclonal Antibody

Product data:

| | |
|-----------------------|---|
| Product Type: | Primary Antibodies |
| Applications: | IHC |
| Recommended Dilution: | ELISA, IHC-P (20 µg/ml) |
| Reactivity: | Bat, Bovine, Gorilla, Human, Monkey, Mouse, Pig, Rat, Gibbon, Horse (Predicted: Hamster) |
| Host: | Rabbit |
| Isotype: | IgG |
| Clonality: | Polyclonal |
| Immunogen: | GPR61 antibody was raised against synthetic 18 amino acid peptide from 2nd cytoplasmic domain of human GPR61. Percent identity with other species by BLAST analysis: Human, Gorilla, Gibbon, Monkey, Marmoset, Mouse, Rat, Bat, Bovine, Elephant, Panda, Horse, Pig, Opossum (100%); Hamster (94%); Lizard, Pufferfish, Zebrafish (89%); Xenopus (83%). |
| Formulation: | PBS, 0.1% sodium azide. |
| Concentration: | lot specific |
| Purification: | Immunoaffinity Chromatography |
| Conjugation: | Unconjugated |
| Storage: | Store at -20°C as received. |
| Stability: | Stable for 12 months from date of receipt. |
| Gene Name: | G protein-coupled receptor 61 |
| Database Link: | NP_114142 Entrez Gene 229714 MouseEntrez Gene 310780 RatEntrez Gene 699055 MonkeyEntrez Gene 83873 Human Q9BZJ8 |
| Synonyms: | BALGR; GPCR3 |
| Note: | Specific for Human GPR61. BLAST analysis of the peptide immunogen showed no homology with other human proteins. |
| Protein Families: | Druggable Genome, GPCR, Transmembrane |



[View online »](#)

Product images:

Anti-GPR61 antibody IHC of human brain, caudate. Immunohistochemistry of formalin-fixed, paraffin-embedded tissue after heat-induced antigen retrieval.