

Product datasheet for **TA316838**

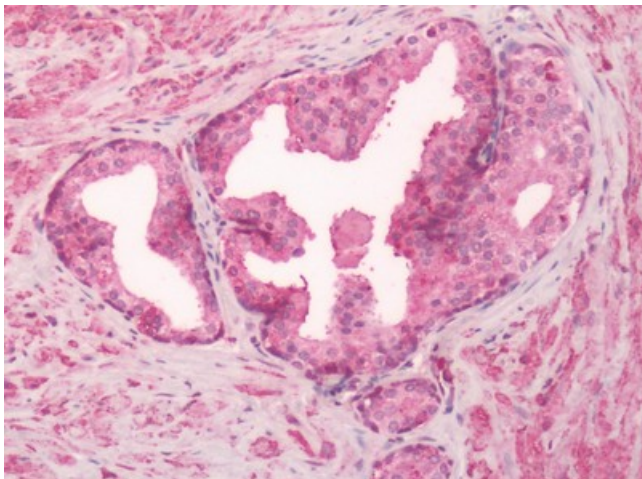
GPR55 Rabbit Polyclonal Antibody

Product data:

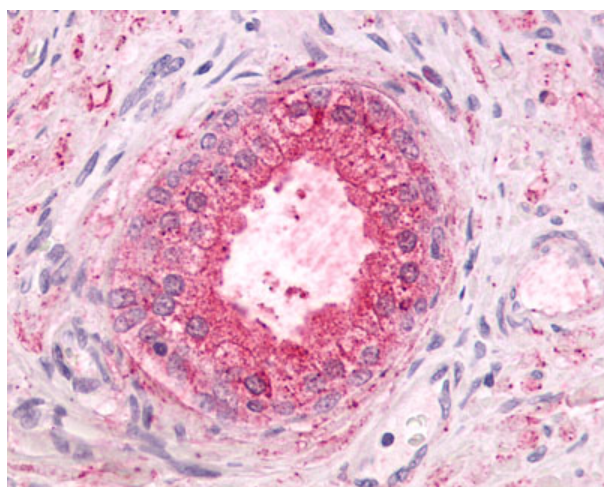
Product Type:	Primary Antibodies
Applications:	IHC
Recommended Dilution:	IHC-P (5 - 10 µg/ml)
Reactivity:	Human (Predicted: Monkey, Bovine, Dog, Hamster, Horse)
Host:	Rabbit
Isotype:	IgG
Clonality:	Polyclonal
Immunogen:	GPR55 antibody was raised against synthetic 17 amino acid peptide from 3rd extracellular domain of human GPR55. Percent identity with other species by BLAST analysis: Human (100%); Gorilla, Gibbon, Monkey, Marmoset, Hamster, Bovine, Dog, Horse (94%); Elephant, Panda, Bat (88%); Rabbit (82%).
Formulation:	PBS, 0.1% sodium azide.
Concentration:	lot specific
Purification:	Immunoaffinity Chromatography
Conjugation:	Unconjugated
Storage:	Store at -20°C as received.
Stability:	Stable for 12 months from date of receipt.
Gene Name:	G protein-coupled receptor 55
Database Link:	NP_005674 Entrez Gene 486157 Dog Entrez Gene 711323 Monkey Entrez Gene 9290 Human Q9Y2T6
Synonyms:	LPIR1
Note:	Specific for Human GPR55. BLAST analysis of the peptide immunogen showed no homology with other human proteins.
Protein Families:	Druggable Genome, GPCR, Transmembrane



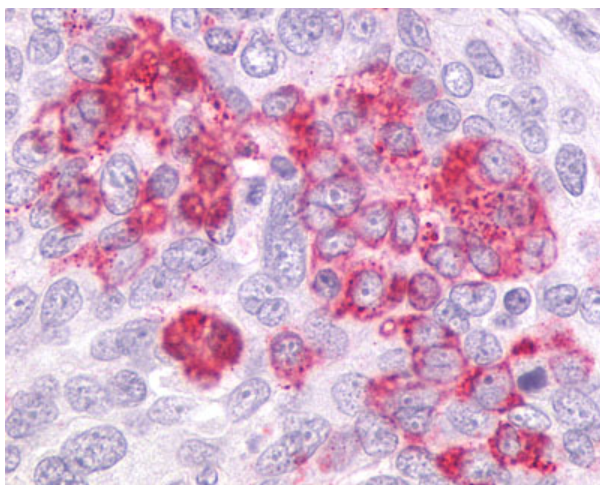
[View online »](#)

Product images:

Human Prostate: Formalin-Fixed, Paraffin-Embedded (FFPE)



Anti-GPR55 antibody IHC of human prostate, benign prostatic hyperplasia. Immunohistochemistry of formalin-fixed, paraffin-embedded tissue after heat-induced antigen retrieval.



Anti-GPR55 antibody IHC of human Ovary, Carcinoma. Immunohistochemistry of formalin-fixed, paraffin-embedded tissue after heat-induced antigen retrieval.